

Creativity in the Landscape

May to September 2025

holmfirth
arts festival



BIG FREE WEEKEND: Saturday 14th & Sunday 15th June **TICKETED EVENTS:** May to September



PARTICIPATION

May to June 2025

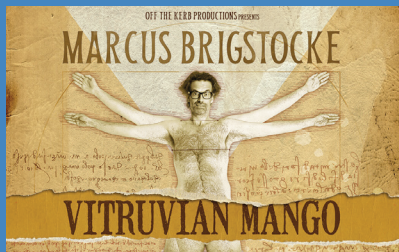
Pages 4–5



BIG FREE WEEKEND

Saturday 14th & Sunday 15th June

Pages 6–15



TICKETED EVENTS

May to September 2025

Page 16-19

BOOK HERE: www.holmfirthartsfestival.co.uk/whatson



Welcome

We are beyond excited to welcome you to our annual Festival, inspired by our beautiful Holme Valley landscape, its heritage and a need to care for our environment.

We promise to bring you a vibrant multi-arts Festival that celebrates our communities, local creatives as well as professional artists from further afield.

Join us for an exciting few months of music, comedy, theatre, film, dance, walks, installations and participatory events for all ages and abilities.

Take part in one of our creative sessions in your neighbourhood, community group or school, join us for the Big Weekend on 14th and 15th June for FREE fun for people and families of all ages, and/or book yourself on a walk or a seat at one of our ticketed events from May through to September.

Our extensive participatory arts programme includes a community co-created River of Art trail, a celebration of seven townships of the Graveship of Holme,

outreach to care homes and walks in the landscape.

This year we are especially excited to welcome our two new patrons, actors Jessica Gunning and Kieran Hodgson; both born and educated here in Holmfirth. We are delighted to have them on board and thank them both for being part of our festival family. It's good to have you in the Holme.

If you already know Holmfirth and the Holme Valley, this is your chance to see it in a new light. If you've not yet discovered this beautiful part of Yorkshire, now is the perfect time to visit.

The Festival is great for families and individuals alike, so don yer walking boots and meander the winding streets of this wonderfully vibrant town.

Bev Adams, *Festival Director*

We'll see you there!



Bev Adams



Jessica Gunning



Kieran Hodgson

PARTICIPATION



River of Art

A visual arts project that teams up local artists with schools and community groups to co-create an art trail along the banks of the River Holme in Holmfirth – see p6.

The Graveship of Holme Project

A creative exploration of the ancient Graveship of Holme constabulary (that remains today) with local events in seven communities – see p5, and a **pageant** on Saturday 14th June – see p9.

Festival in your Home

Bringing festive activities to local care homes. *If you would like craft, singing and musical activities in your care home, please contact access@holmfirthartsfestival.co.uk*

Walks

Activity walks exploring nature, history and landscape – see pages 16, 17 and 18.



**THEATRE, MUSIC, POETRY,
VISUAL ART & STORYTELLING**

Graveship of Holme Project

ALL EVENTS FREE donations welcome

The Graveship of Holme refers to an historic administrative district within the Manor of Wakefield, where the area is governed by a “grave” or constable. The current Grave is Jimmy Dickinson. The Graveship of Holme project is a creative community engagement activity celebrating the townships of Austonley, Cartworth, Fulstone, Hepworth, Holme, Upperthong and Wooldale. These communities have worked with The Children’s Arts School to share their ideas, stories, creativity, memories and passions at seven Township events.

Township Events

Austonley Celebrates Textiles

Saturday 31st May 2pm-4pm

Holme Sunday School, HD9 2QG

Art, crafts and singing from Common Threads, Monkey Business and Vocal Expressions Ladies Choir.

Fulstone Celebrates Singing

Sunday 1st June 10am-12noon

Earthworks New Mill

Community Garden, HD9 7BL

A family bird making workshop and singing with New Mill Male Voice Choir.

Upperthong Celebrates The Luddites

Sunday 1st June 2pm-4pm

The Tech, HD9 3AR

A launch of David Hinchcliffe’s new book, *A Dark And Cheerless Time*: The Upperthong Shooting of 1812 and extracts from The Red Shed Players new play *AI vs The Luddites*.

Cartworth Celebrates Water and Wool

Friday 6th June 3:15-4pm

Hinchcliffe Mill School, HD9 2PF

A sharing of art work and singing from children of Hinchcliffe Mill School.

Holme Celebrates Victorian Children

Saturday 7th June 1:15pm-2pm

Meet at children’s Playground, HD9 2QQ

Join Holmfirth Writers’ Group and Holme School for a story walk with music, poetry and dancing, then head to Mackie’s Barn for the Holme Garden Party from 2pm-4pm.

Hepworth Celebrates Hepworth

Sunday 8th June 10am-12 noon

Hepworth Church, HD9 1TR

Take part in craft activities and see a display of art created by Hepworth Art Group and Hepworth School.

Wooldale Celebrates Music

Sunday 8th June 4.30pm-7pm

Holmfirth Parish Church, HD9 1HA

A talk by Tony Johnson about his craft of making lutes, a display of photos of lute making taken by Adrian James and music on lutes played by Tony and by Dr. Sara Saloum.



BIG FREE WEEKEND



INSTALLATION (COMMISSION)

River of Art

CURATED BY SARAH BRANSON

Friday 13th June to Monday 16th June

Throughout the day

River Holme, Holmfirth

FREE donations welcome

A community co-created art trail along the banks of the River Holme in Holmfirth made Holme Valley schools and community groups working with local artists. Take a wander along the river in any direction from Crown Bottom to see how many installations you can spot, or ask a volunteer for a trail map and tick them all off.



FILM

Word Weave

BY HOLMFIRTH WRITERS' GROUP

Saturday 14th June 12noon–5pm

Upstairs at the Magic Rock Tap, HD9 7DE

FREE Donations Welcome

A half-hour film by video-artist John Coombes with a soundtrack of writing by Holmfirth Writers' Group. This eclectic mix of poetry and prose takes the theme of Weave from fashion and fleas, to Luddites and love, families, grief and tapestries. The film will run continuously from 12pm–5pm. Anthologies of Weave will be on sale. Do drop in!



ACTIVITY

Creative Activity Gazebo

BY RIVER HOLME CONNECTIONS

Saturday 14th June 12noon–5pm

Holmside Gardens, HD9 1AB

FREE Donations Welcome

Get creative and explore the biodiversity of the River Holme.

CONSULTATION

Mural Consultation Gazebo

BY GRAVESHIP OF HOLME

Share your ideas for a mural to welcome visitors to Holmfirth planned for Linley & Simpson's exterior wall on Huddersfield Road.



MUSIC

Valley Beats

BY RHYTHM STICK

Saturday 14th June 12noon & 1:30pm

Holmside Gardens, HD9 1AB

FREE Donations Welcome

Enjoy infectious percussive rhythms from this friendly, local samba band comprising adults of all ages and from all walks of life.

All events during the Big Weekend are supported by British Sign Language interpretation



**ACTIVITY****SCRAPtastic Gazebo**
BY FAIRANDFUNKY**Saturday 14th June****12 noon-1:30pm & 2pm-4pm**

Holmside Gardens, HD9 1AB

FREE Donations Welcome

Learn how to turn recycled materials into beautiful works of art to take away.

Access the Outdoors
BY EXPERIENCE COMMUNITY**Saturday 14th June 12 noon-5pm**

Methodist Church Gardens, HD9 7EQ

Explore Experience Community's equipment for inclusive and accessible outdoor experiences.

**ACTIVITY****Fairy Bubbles**
BY POPPINS PRESENTS**Saturday 14th June****12:30, 2pm & 3:15pm**

Methodist Church Gardens, HD9 7EQ

FREE Donations Welcome

Have a wash in the Fairy Garden! Use all kinds of wands to make magical bubbles! You can even stand inside them, learn a fairy dance and of course everyone's favourite... pop the bubbles with Fairy Poppy!

**ACTIVITY****Bollywood Dance Along**
WITH SALMA'S BOLLYWOOD ACADEMY**Saturday 14th September****12:30pm & 2:00pm**

Holmside Gardens, HD9 1AB

FREE Donations Welcome

Get ready to move, dazzle, and celebrate in vibrant Bollywood style with dance sessions perfect for all ages and abilities – henna, bindis and costumes provided. Stick around to show off your moves in the pageant at 4pm.



MUSIC

Valley Voices BY VOCAL EXPRESSIONS LADIES CHOIR

Saturday 14th June 3:30pm
Holmside Gardens, HD9 1AB

FREE donations welcome

Accompanied by Lloyd Buck, Vocal Expressions sing a range of from the classics to the musicals, many with a theme of nature and landscape.



© Richard Asquith

PAGEANT

The Thread That Binds Us BY THE GRAVESHIP OF HOLME (A STEVE SYKES COMMISSION)

Saturday 14th June 4pm
Holmside Gardens, HD9 1AB

FREE donations welcome

A pageant that weaves together the stories and imagery of the seven townships of The Grapeship of Holme into a colourful performance. Pageant makers, who have worked with The Childrens' Art School, Charlie Wells. Holmfirth Writers' Group, Caroline Devenport and Nick Wells include: Common Threads, Families at Coopers Yard and Earthworks New Mill Community Garden, David Hinchliffe,

Dave Hanvey, Hepworth J&I School, Hinchliffe Mill J&I School, Holme J&I School, New Mill Male Voice Choir, Monkey Business Playgroup, Square Peg Activities, Upperthong J&I School, Vocal Expressions Ladies Choir and Wooldale Rainbows.



BIG FREE WEEKEND

SATURDAY

6

**MUSIC****Pop Up Opera****BY NICOLA MILLS****Saturday 14th June 12:45pm**

Holmfirth Parish Churchyard, HD9 1HA

Saturday 14th June 2:30pm & 3:15pm

Holmside Gardens, HD9 1AB

FREE donations welcome

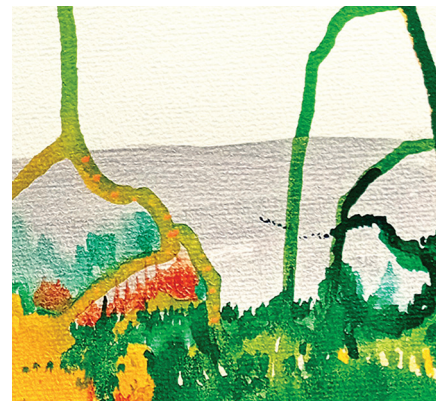
A chance to hear world-class opera in the most unexpected of places! Offering a fresh take on the art form, Nicola's enchanting, powerful voice will fill the streets of Holmfirth with beautiful arias and classic opera hits.

**LOCAL HERITAGE, MUSIC****The 1812 Upperthong Incident****BY DAVID HINCHLIFFE & DAVE HANVEY****Saturday 14th June 1pm**

Holmside Gardens HD9 1AB

FREE donations welcome

A brief site-specific walk of Holmside Gardens telling the story of the 1812 Upperthong Incident with music and song.

**STORYTELLING/POETRY/MUSIC****Stories from Word Weave****BY HOLMFIRTH WRITERS' GROUP****Saturday 14th June 2:45pm**

Holmside Gardens, HD9 1AB

FREE donations welcome

Spoken excerpts from Holmfirth Writers' new anthology of poetry and prose set to music and song.

ECO EXPO

Saturday 14th & Sunday 15th 12noon-5pm Methodist Church, HD9 7EQ

Yorkshire-based artists, activists and scientists present a range of models, interactive artworks, performances, games, and activities in an exploration of climate sustainability and our shared journey towards a more eco-conscious future – all events are free.



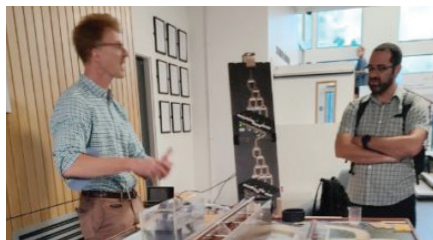
INSTALLATION

ResonaTree BY SUZIE CROSS

**Saturday 14th & Sunday 15th June
12noon-5pm**

Methodist Church, HD9 7EQ

Experience a unique blend of art, nature, and sound, with this interactive sound sculpture which uses recordings from Suzie's Holme Valley walks to imagine the sensory life of trees. Join Suzie for a "deep listening" walk along the river at 2pm each day.



ACTIVITY

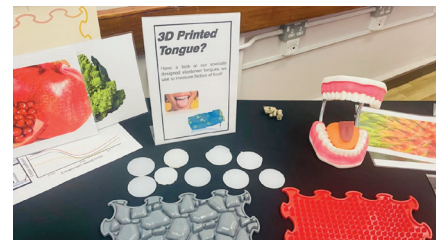
Wetropolis Flood Investigator

**BY PROFESSOR ONNO BOKHOVE,
UNIVERSITY OF LEEDS**

**Saturday 14th & Sunday 15th June
12noon-5pm**

Methodist Church, HD9 7EQ

An engaging model from Leeds Institute of Fluid Dynamics that shows how rainfall affects a river-catchment landscape giving a visual representation of urban flooding and the unpredictable nature of extreme weather.



ACTIVITY

Feel for Food BY DR BEN KEW, UNIVERSITY OF LEEDS

**Saturday 14th & Sunday 15th June
12noon-5pm**

Methodist Church, HD9 7EQ

Explore the exciting world of food and sustainability. Discover how we can make alternative proteins more enjoyable to eat by playing a fun curling-inspired game that helps explain the textures and qualities of plant-based foods and investigate the textures of a 3D printed tongue.

holme valley climate action. partnership

ACTIVITY

Holme Valley Climate Action Partnership

Saturday 14th June

12noon–5pm

Methodist Church, HD9 7EQ

FREE Donations Welcome

How certain are you about recycling? Come and play our recycling game to help build your confidence. There's a small plant prize for all winners. HVCAP is a friendly group of volunteers, aiming to build a more sustainable future for the Holme Valley such as encouraging 'grow your own food' initiatives and providing eco help in the winter months for food bank recipients. We'd like to hear your ideas about how we can build an eco future. Maybe you'd like to join us? Come and say hello.



THEATRE

Who Ya Gonna Call? (IN THE EVENT OF AN EMERGENCY) BY VESPER HILL

**Saturday 14th & Sunday 15th June
2-3pm**

Methodist Church, HD9 7EQ

FREE Donations Welcome

We've known about climate change for years... so why are we badly prepared? With the help of some buckets, some sand, a few old vinyl records and a dash of black humour, this solo performance explores some difficult questions and presents some modest proposals for positive change.



THEATRE, MUSIC, ACTIVITY

Urban Oasis BY PLANET ACTION STREET ARTS

Sunday 15th June 12noon–5pm

Holmfirth Methodist Church Gardens,
HD9 7EQ

FREE Donations Welcome

Award winning Urban Oasis combines street theatre and science to show how much insects do for us, how much we need them, and what we can all do to help reverse the very worrying loss of insects in due to the use of toxic chemicals. Come and meet our giant bees, butterflies and musical ant, do our painted lady jigsaw and help us plant for pollinators.



MUSIC

Banda Na Rua BY RHYTHM STICK

Sunday 15th June 12noon & 2:45pm
Holmside Gardens, HD9 1AB

Sunday 15th June 2pm
Town Gate Car Park, HD9 1HA

FREE Donations Welcome

A passionate blend of Brazilian beats with modern British style, Banda Na Rua are a mass of percussion energy with a head-turning, foot-tapping sound that just makes you want to dance! This "Band on the Street" is more than just a samba band, blending

world music with funk and drum n bass – all arranged by experienced band leader Katie Mallard.



MUSIC

Pop Up Opera BY NICOLA MILLS

Sunday 15 June 12:15pm & 1:15pm
Holmside Gardens HD9 1AB

Sunday 15 June 4:15pm
Town Gate Car Park

FREE donations welcome

A chance to hear world-class opera in the most unexpected of places! Offering a fresh take on the art form, Nicola's enchanting, powerful voice will fill the streets of Holmfirth with beautiful arias and classic opera hits.



ACTIVITY

Fairy Bubbles BY POPPINS PRESENTS

Sunday 15th June 12:30pm
Methodist Church Gardens, HD9 7EQ

Sunday 15th June 2pm & 4:15pm
Holmside Gardens, HD9 1AB

FREE Donations Welcome

Have a wash in the Fairy Garden! Use all kinds of wands to make magical bubbles! You can even stand inside them, learn a fairy dance and of course everyone's favourite... pop the bubbles with Fairy Poppy!



THEATRE

Hanging by a Thread BY DIY THEATRE COMPANY

Sunday 15th June 12:30pm & 3pm
Holmside Gardens, HD9 1AB

FREE Donations Welcome

Created by a skilled company of artists with learning disabilities, this multi-sensory show invites audiences to connect with, and care about, our natural world. Interactive theatre, songs, live music, puppets and sensory props made from repurposed and recycled materials are combined to create a magical experience.

Pre and post show workshops explore the themes of nature, connectedness and environment through the senses.





THEATRE

Seed BY PIFPAF

Sunday 15th June 1:30pm & 3:45pm

Holmside Gardens, HD9 1AB

FREE Donations Welcome

Join rockabilly tree-planting anarcho-nomad, Wilford, planting trees where he shouldn't, living in his shed and on the run from his past and his arch-enemies, SLUGS! They are out to get him for his contraband seeds. *Seed* is a wild Rock and Roll journey into nature fighting back.



THEATRE

Accelerate

BY HIGHLY SPRUNG PERFORMANCE

Sunday 15th June 2:15pm & 4:30pm

Town Gate Car Park, HD9 1HA

FREE Donations Welcome

Returning to Holmfirth with their brand-new show, *Accelerate* from Highly Sprung is a daring physical spectacle. Combining dark humour, bold movement, aerial performance and conveyor belt dance, the show exposes the flaws of our relationship with energy. When it comes to the environment, are we really ready for change? *Accelerate* explores how

'dirty' energy fuels us and climate change is running out of steam. As the performers' energy reserves begin to run low, there's no choice – they must look for alternatives.



TICKETED EVENTS

16 BOOK HERE: www.holmfirthartsfestival.co.uk/whatson



WALK

Sonic Ramble WITH SUZIE CROSS

Sunday 25th May 9:50 for 10am start

Meet outside Holmfirth Co-op, HD9 7AX

Booking a FREE ticket is essential

A meditative, gentle walk through nature in Holmfirth. Through the practice of deep listening, you'll attune your ears to the rich tapestry of sounds around you, both audible and hidden. This immersive journey will transform the way you listen, inviting you to slow down and connect deeply with nature's unseen symphony.

A gentle to moderate two hour walk with steps, tree roots, stiles and gradients. Boots are recommended.



WALK/ACTIVITY

Accessible Amble

Wednesday 25th June

11:30am–1:30pm

Sands Leisure Centre Car Park, HD9 3JL

Booking a FREE ticket is essential

Join us for an accessible wander, designed for everyone, including those with access needs, their families, and carers. Take a peaceful stroll beside the river, enjoy live music, singing, dancing, and creative activities. Relax in a comfortable undercover area, where we will provide drinks and homemade cakes. Feel free to bring your own packed lunch!



MUSIC

Opera for the People

BY NICOLA MILLS PLUS OPENING

ACT BY MADDIE CLARE

Saturday 5th July 7:30pm

Christ Church, New Mill, HD9 7BL

Tickets £17/£15 conc./£8.50 U16

Victoria Wood meets Pavarotti in an evening of popular opera and songs from the shows. Taking the 'posh' out of opera, Nicola's stories tell of working-class life and singing in some of Europe's finest opera houses. And it's not just opera, the audience chooses the songs from her Song Menu (Mozart to musicals, to Elvis). It's like nothing you've seen before.



MUSIC

Spafford + Campbell PLUS OPENING ACT DOOGLE

Saturday 12th July 7:30pm

Hepworth Holy Trinity Church, HD9 1TR

Tickets £17/£15 conc./£8.50 U16

This fiddle player and guitarist bring together English traditional and contemporary experimental music in visceral and disarmingly emotional performances which have rapidly made these instrumentalists the talk of the folk scene. Each musical piece tells a different tale through a unique musical language the pair have created together which manages to orbit many different sound worlds.



MUSIC

Rachel Modest
PLUS OPENING ACT
AJAY B.BOP



Saturday 26th July 7:30pm
Holmfirth Parish Church, HD9 1HA

Tickets £17/£15 conc./£8.50 U16

Rachel Modest has been brought up in the Gospel tradition, she cut her musical stripes singing in church and various choirs. In this one woman show you can expect powerful heartfelt, upbeat original and familiar blues, jazz, pop and gospel songs. Rachel is currently signed to Numen Records as a solo artist and was a semi-finalist on *The Voice UK* (2022).



© Andy Loader

WALK

Graveship of Holme Walk
BY HOLMFIRTH ARTS FESTIVAL

Saturday 2nd August
9:50am for 10am start

Park close to junction of Cartworth Moor Rd and White Gate Rd, HD9 2TH

Booking a FREE ticket is essential

Enjoy a three mile, three hour walk with moorland views of the Graveship's seven townships, including England's last active turbarry at Cooke's Study, overseen by Constable (Grave), Jimmy Dickinson.

Sturdy boots essential for rough terrain. Dogs are not permitted on the grouse moor.



© York Tiller/Real World Music

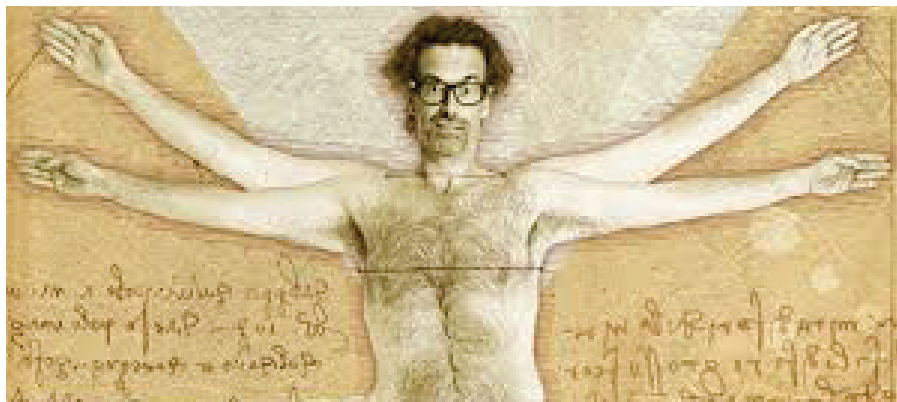
MUSIC

Love Is Not All BY SCHWA
PLUS OPENING ACT **BEES KNEES**

Saturday 16th August 7:30pm
Hade Edge Band Building, HD9 2AQ

Tickets £17/£15 conc./£8.50 U16

Peter Spafford and Richard Ormrod of Schwa, supported by a trio on guitar, bass and drums, use their thirteen original songs to tell the story of 1930s Edna St. Vincent Millay, a radical, bisexual poet inspired by nature, and the first woman to win the Pulitzer Prize for Poetry.



COMEDY

Vitruvian Mango **BY MARCUS BRIGSTOCKE**

Friday 12th September 7:30pm
The Civic, Holmfirth, HD9 3AS

Tickets £20/£18 conc.

What are men for? Most heavy things can be lifted by machines and most problems can be solved by computers and most puddles can be crossed without us gallantly draping our capes over them – so are we fellas of any use at all? Award winning MAN Marcus Brigstocke thinks we might still serve some useful function. But what is

it? This new tour show will resolve the entire issue once and for all (in a non-patriarchal, open minded, progressive sort of way).

'...charming, hilarious and utterly refreshing...' The Sunday Mirror

'Sharpest one-liner merchant' The Sunday Times

'If you haven't seen him live, then you haven't seen him at his very best' The Mirror



MUSIC

Ceithidh Mac Trio **WITH OPENING ACT VANJA**

Saturday 20th September 7:30pm
Hade Edge Band Building, HD9 2AQ

Tickets £17/£15 conc./£8.50 U16

Absorbing in its originality and with a progressive twist to her music, Ceithidh Mac is an alt.folk singing cellist inspired by the natural world. Accompanied by vibraphone and drums, Ceithidh creates songs that soar with contemporary arrangements and instrumentation playing with live and electronic elements.

Get Involved...

VOLUNTEER...

If you would like to get involved with our Festival as a volunteer we would love to hear from you. There are opportunities to join the friendly festival team of Supporters who help the Festival all year round. Whatever your availability and interests, we can offer you a rewarding and fun experience. Email manager@holmfirthartsfestival.co.uk for more information or speak to one of our team at an event.

DONATE AS MUCH AS YOU CAN...

We work hard to raise funds to bring the best arts events and activities to the Holme Valley, many of which are free of charge. So donate as much as you can in our collection buckets at events, or online using the DONATE QR Code on the back of this brochure. More information on our website www.holmfirthartsfestival.co.uk/supportus

A BIG THANK YOU!

Many people gift their time and talent to make this festival happen and we are indebted to every single one of you. Thanks to all who came to help after the programme went to print and apologies in advance if we missed anyone in this list.

Cllr Lawrence Baylin, Creative Kirklees, Amanda Crawshaw, Coopers Yard, Cllr Moses Crook, Margaret Dale, Jimmy Dickinson, Earthworks New Mill Community Garden, Fair Trader, Alex Greenwell, Jessica Gunning, Kieran Hodgson, Holmfirth Cooperative, Holmfirth Library, Holmfirth Methodist Church, Holmfirth Parish Churches, Holmfirth Writers' Group, Holme Valley Parish Council, Holme Sunday School, Holme Valley Climate Action, Andy Leader, Longley Farm, Cllr Jane Rylah, Magic Rock, Kerry Sykes/Holmfirth Events, River Holme Connections, Hinchliffe Mill School, The Bees Knees, The Civic Holmfirth, The Graveship of Holme, The Tech and all the business and shops that display our programmes and posters.

THANKS TO OUR FUNDERS

Stotts Coaches, Bike Shed Digital Media, Holme Valley Parish Council, Holme Valley Ward Councillors/Kirklees Council, Big Give Arts for Impact, The Graveship of Holme, Arts Council England and National Lottery Heritage Fund.

THE FESTIVAL COULDN'T HAPPEN WITHOUT

The Core Team

*Bev Adams: Festival Director
Josh Haslam: Festival Manager/
Sound & Light Production*

*Leviart Marketing: PR & Social Media
Jo Rose Brewerton: Access & Inclusion Liaison
Eva Taylor: Graphic Design
Dr Samuel McKay: Evaluator
John Coombes: Videographer
Stuart Robertshaw: Safety Officer*

Board of Trustees

*Jan Ansell
Kate Buchanan (Chair)
Sarah Bradley (Vice Chair)
Amanda Crowther
Val Gunning
Barbara Lawson (Secretary)
Helena Lyons
Sarah Mason-Dixon
Pamela Massett
Steve Wright*

Supporters

Lynda Allen, Greta Bradley & Lesley Sykes (Co-chairs of Supporters), Sally Brown, Alison Carthy, Sue Clarke, Rose Cuthbertson (Bookkeeper), Ali Deering, Christopher Deering, Hilary Fletcher, Sandy Goler, Rachel Haslem, Beverley Haynes, Liz Heywood, Jenny Holmes, Roger Lancaster, Jane Madine, Jill Martin, Sue Mawby, Maggie McEwan, Jacob Mason-Dixon, Debbie Merrick, Robert Merrick, Elaine Park, Penny Peters, Angela Rosenfeld, Deborah Sanderson, Jane Wass and Deb Wyles



© Andy Loader

ACCESS & INCLUSION

Holmfirth Arts Festival aims to challenge discrimination and dismantle barriers to participation in the arts by ensuring that all artists, contributors, audiences and participants can access what they need to take part. We are committed to access and inclusion and have a designated member of staff to help with all your access and inclusion requirements and free tickets are available for personal assistants to assist ticket holders.

Holmfirth has some narrow streets, steps and cobbles in places and it can be difficult for people with limited mobility to get around. Most of the

venues for outdoor arts events are accessible by wheelchair. We are engaging a British sign language interpreter for the Big Weekend and will have accessible viewing areas in each outdoor venue. We are offering a quiet zone designed to provide a peaceful retreat for festival goers at the Big Weekend. The Nurture Tent will be a safe, calming space for neurodiverse attendees to take a break from the hustle and bustle. Providing a comfortable ambience and soothing background music, it's the perfect spot to recharge, relax, and regulate in a tranquil environment. Whether you need a moment of calm or a peaceful space to unwind, the Nurture Tent is for you.

A Large Print version and a Word version of this programme are available on request.

Comprehensive access information, including a video of a walk around the town is available on our website: <https://www.holmfirthartsfestival.co.uk/your-visit>. Or click on the QR Code opposite.



To discuss your access requirements,

please email Jo at access@holmfirthartsfestival.co.uk

TRAVEL & PARKING

Please leave your car at home if you can and explore eco-friendly transport options like cycling, walking, or public transport to help protect our planet.

The Bus Station is central – a ten minute walk to most town centre venues. It is just off the A635 with regular buses from across the Holme Valley, Wakefield, Huddersfield, Sheffield, Ashton under Lyne, Glossop, Penistone and Barnsley.

Stotts Coach Services are running free buses on Saturday on the H1, H2, H3, H5, H6, H7 and 335 bus routes. For more information go to www.wymetro.com/plan-a-journey.

If you do need to bring your car, Long Stay Parking is at Crown Bottom car park at HD9 3HW, which costs £3.30 for up to five hours or £6.50 for all day Monday to Sunday 8am-4pm. Parking is free for Blue Badge holders. Short Stay parking at Town Gate is closed for the Festival on Sunday.

HOLMFIRTH TOWN CENTRE VENUES

1 Holmfirth Co-op

Market Street, HD9 7AX

Parking at Crown Bottom. Accessible toilets during opening hours

2 Methodist Church and Gardens

104 School St, HD9 7EQ

Parking at Crown Bottom, accessible toilet inside the church

3 The Civic Holmfirth

Huddersfield Road, HD9 3AS

Disabled drop off, parking at Crown Bottom, ramped access, accessible toilet

4 Holmfirth Parish Church and Churchyard

Town Gate, HD9 1HA

Parking at Crown Bottom, steep ramped access, accessible toilets on Town Gate and The Old Bridge Hotel

5 Town Gate Car Park

Town Gate, HD9 1HA

Parking at Crown Bottom, accessible toilets on Town Gate and The Old Bridge Hotel

6 Holmside Gardens

New Mill Road, HD9 1AB

Parking at Crown Bottom, steep

ramped access, accessible toilets on Town Gate, The Old Bridge Hotel and the Co-op

7 The Tech

140 Huddersfield Rd, HD9 3AR

Disabled access at the rear, Accessible toilets, free parking off Huddersfield Road

8 Magic Rock Tap

28 Victoria St, HD9 7DE

Parking at Crown Bottom, accessible toilets downstairs. The event is upstairs, no lift

HOLME VALLEY VENUES

Sands Recreation Ground

Thongsbridge, HD9 3JL

Free parking, accessible toilets in the Leisure Centre

Holme Sunday School

Fieldhead Lane, Holme, HD9 2QG

Stepped access with handrail, downstairs toilet, three spaces outside church prioritised for people with access needs, plus roadside parking

Hinchliffe Mill School

Waterside Lane, Holmbridge,

Holmfirth HD9 2PF

Roadside parking, accessible toilet

Holme Village Play Area

Meal Hill Road, Holme, HD9 2QQ

Roadside parking, Outdoor space with uneven surfaces and cobbles, Accessible toilets on Woodhead Rd

Hepworth Holy Trinity Church

Dean Bridge Lane, Hepworth, HD9 1TR

Accessible toilet, disabled drop-off, roadside parking, hearing loop, ramped access

Hade Edge Band Building

56 Greave Rd, Hade Edge, HD9 2AQ

Accessible toilet, disabled parking, parking, ramped access

Christ Church

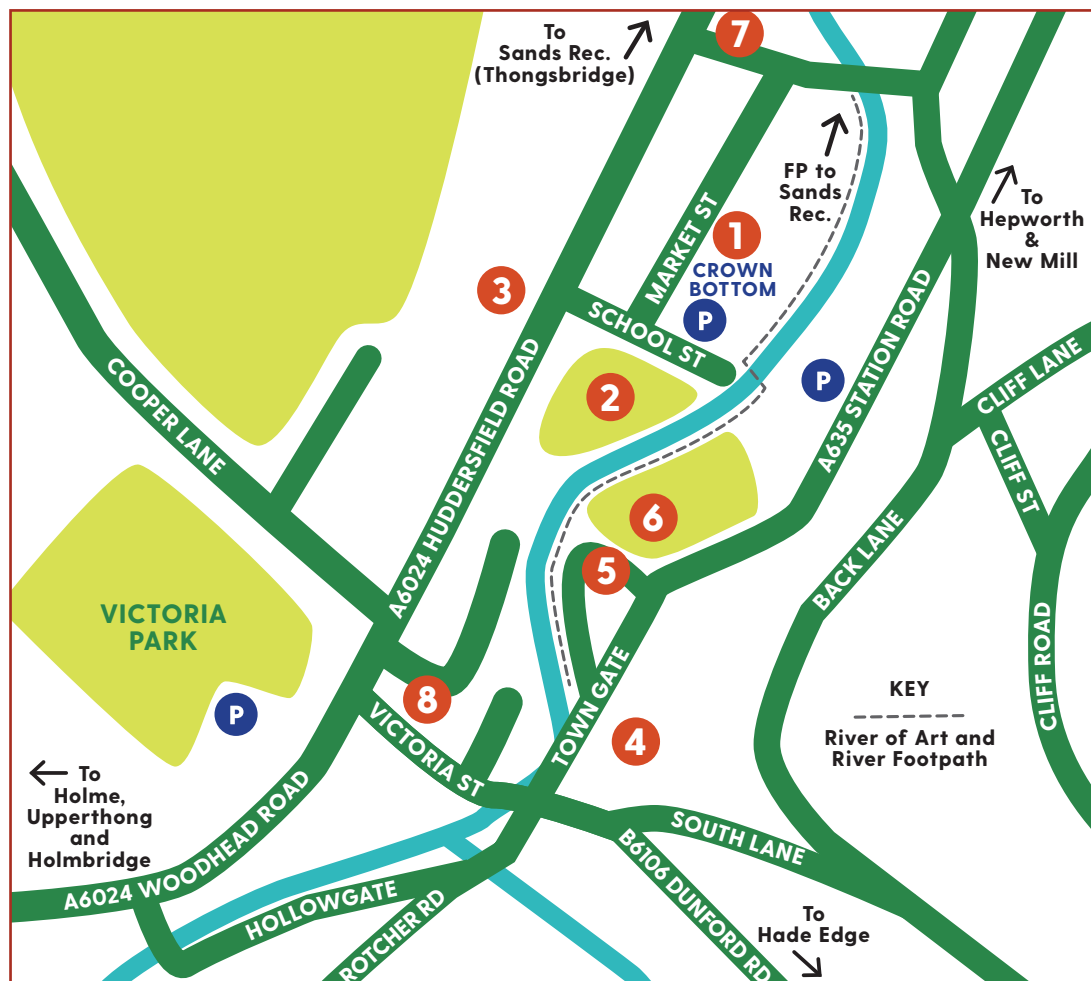
Sude Hill, New Mill, HD9 7BL

Accessible toilets, ramped access, roadside parking

Earthworks Community Garden

Sude Hill, New Mill, HD9 7BL

Roadside parking Christ Church New Mill, HD9 7ER or Fulstone Hall La. Accessible toilets at Christ Church, steep inclines, wheel/pushchair access easier from Fulstone Hall La.



**BIKESHED
DIGITAL
MEDIA**



New Philanthropy
for Arts & Culture



Made possible with



Supported using public funding by
**ARTS COUNCIL
ENGLAND**

ABOUT US



© Andy Loader

Holmfirth Arts Festival **ONE OF YORKSHIRE'S BEST** **SMALL FESTIVALS**

Holmfirth Arts Festival envisions an extraordinary creative future for the Holme Valley by producing life enhancing events, inspired by the landscape and presented in alternative spaces, for everyone to participate in and enjoy.

We nurture CREATIVITY, CELEBRATE people and place, CARE for each other and our environment and CONNECT people to each other and where they live.

Surrounded by the glorious Pennine Hills of West Yorkshire, Holmfirth Arts Festival celebrates creativity in the landscape by:

Commissioning new work and supporting diverse artists

Inspiring all communities to engage with the arts and their heritage

Caring for the environment

Connecting locally, regionally and internationally

Fostering Inclusion, Diversity, Equity and Access

DONATE Every pound you donate goes towards bringing the best artists and arts activities to the Holme Valley. For more information about how to support us go to: www.holmfirthartsfestival.co.uk/supportus.
To donate £10, text HAF2025 to 70191



Fundraising, payments and donations will be processed and administered by the National Funding Scheme (Charity No: 1149800), operating as DONATE. Texts will be charged at your standard network rate. For Terms & Conditions, see www.easydonate.org

Holmfirth Arts Festival is a company registered in England as Holmfirth Arts and Music Ltd – company number 7198613. Holmfirth Arts Festival is a charity – registration number 1141623. Registered Office: c/o Fair Trader, 34 Huddersfield Rd, Holmfirth, HD9 2JS

Products used in this programme are from sustainable sources. When the festival is over, please recycle, compost or repurpose.

f@HolmfirthArtsFestival i@holmfirtharts @Holmfirtharts www.holmfirthartsfestival.co.uk