

holmfirth  
arts festival



May to October 2023

**FORCES OF NATURE**

 @HolmfirthArtsFestival

 @holmfirtharts  @HolmfirthARTS

[www.holmfirthartsfestival.co.uk](http://www.holmfirthartsfestival.co.uk)



# Highlights

KYLA BROX



JENNY ECLAIR



URBAN ANGELS



DARK HORSE THEATRE



HEPWORTH BAND



GRIST TO THE MILL PRODUCTIONS



MÉABH BEGLEY TRIO



ART IN THE LANDSCAPE



THEATRE TÉMOIN



HANDMADE PARADE

# Welcome to Holmfirth Arts Festival 2023



Bev Adams  
Festival Director

## FORCES OF NATURE

Nestled in the Holme Valley, surrounded by the glorious Pennine Hills of West Yorkshire, Holmfirth Arts Festival celebrates creativity in the landscape in an extended programme across the valley from May to October 2023.

This year's theme, Forces of Nature, is deeply inspired by our location in the Peak District National Park and we have invited the best local, national and international artists to respond to the environment, our unique landscape and its wonderful people, in all their diversity.

### #HAF2023 #Holmfirth

Don't forget to hashtag your social media posts from the event. We will pick our favourite festival image and offer a prize to the winner who captures the event in the best way.

Our inspirational indoor programme kicks off in May with blues soul diva **Kyla Brox**. **Grist to the Mill Productions** bring us the classic story of Moby Dick, whilst **The Méabh Begley Trio** bring the craic from Ireland. The **Hallam Sinfonia** make their Holmfirth debut with music on strings and harpsichord; **Hepworth Band** bring us brassy Forces of Nature themed music and **Jenny Eclair** rounds off the indoor events in October with her new comedy show Sixty Plus! (FFS!).

### Support Us

## DONATE

Scan the QR code to donate an amount of your choice.



**DONATE BY TEXT**  
To donate £10, text HAF2023 to 70191

The cracking outdoor programme includes **four guided walks** with music and performance, **photographic exhibitions** and **Art in the Landscape** again in New Mill. You can join in the **Forces of Nature Parade** and enjoy a day of **live community performances** on Saturday 17th June in Holmfirth Town Centre, complete with guest appearances from characters **Nora Batty** and **Compo Simmonite**.

On Sunday 18th June, you will be amazed by a sound installation from **Chris Ruffoni**, street theatre from **Théâtre Témoin**; **Callaloo Carnival Arts**; **Neighbourhood Watch Stilts International** and **Pressure Drop**. New commissions include **Urban Angels**, **Dark Horse Theatre** and recipient of this year's Steve Sykes Commission, harpist **Ellie Ford**.

There are loads of opportunities to **bring your own creativity** to the Festival by getting involved in the parade, community performances, Art in the Landscape, training and music making opportunities for young people as well as an **autumn lantern parade**.

If you already know Holmfirth and the Holme Valley, the Festival is an opportunity to see it a little differently. If you've not yet discovered this beautiful part of Yorkshire, now is the perfect time to visit.

For more information about how to support us go to **www.holmfirthartsfestival.co.uk/supportus**

## MAY TO OCTOBER 2023

DATE/COMPANY	TIME	LOCATION	PAGE	DATE/COMPANY	TIME	LOCATION	PAGE
<b>Monday 1st May– Monday 30th October (EXHIBITION)</b> <b>Forces of Nature from Industry to Culture</b> BY U3A DIGITAL PHOTOGRAPHY GROUP	Co-op opening hours	Holmfirth Co-op Coffee Shop	4	<b>Sunday 18th June (THEATRE)</b> <b>FreeFall BY URBAN ANGELS</b>	12:15pm & 2:30pm	Starts at Picturedrome	13
<b>Wednesday 17th May (WALK)</b> <b>Accessible Activities Amble</b>	11am–1:30pm	Magdale Dam Meet Queens Square Business Park	4	<b>Sunday 18th June (THEATRE)</b> <b>To Be Us BY DARK HORSE THEATRE</b>	1pm & 3:45pm 2pm	Holmside Gardens Holmfirth Parish Churchyard	14
<b>Saturday 20th May (MUSIC)</b> <b>Kyla Brox with Dan Blomeley PLUS SUPPORT Toby Cooper</b>	7:30pm	Brockholes Village Hall	5	<b>Sunday 18th June (WALKABOUT)</b> <b>Butterflies BY NEIGHBOURHOOD WATCH STILTS INTERNATIONAL</b>	1:15pm & 3:30pm	Holmside Gardens	14
<b>Saturday 17th June– Sunday 25th June (INSTALLATION)</b> <b>Art in the Landscape</b>	10am–4pm	Earthworks New Mill Community Garden	6	<b>Sunday 18th June (THEATRE)</b> <b>Flood BY THEATRE TÉMOIN</b>	1:30pm & 4:30pm	Towngate Car Park	15
<b>Saturday 17th June (MUSIC)</b> <b>Music Garden Party FEATURING Banda Na Rua, Cafe Orchestra, Fretmates, Ability Options, Soul Choir and Woven in Kirklees</b>	12noon–5pm	Holmside Gardens	7	<b>Saturday 1st July (PARTICIPATION)</b> <b>Community Celebration of Stitch WITH WOVEN IN KIRKLEES</b>	1pm–5pm	Venue TBC	15
<b>Saturday 17th June &amp; Sunday 18th June (INSTALLATION)</b> <b>Instruments of Light Dependent Vibration BY CHRIS RUFFONI</b>	12noon–5pm	Holmfirth Methodist Church Gardens	8	<b>Sun 9th July &amp; Sun 3rd Sept (WALK)</b> <b>A Story Walk Around Holme WITH HOLMFIRTH WRITER'S GROUP</b>	11:30am–12:45pm	Meet in Holme Village Car Park	16
<b>Saturday 17th June (AERIAL DANCE)</b> <b>Flamin' Nora Flying Compo</b> BY URBAN ANGELS	12noon & 3:15pm	Outside Picturedrome	8	<b>Friday 28th July (MUSIC)</b> <b>The Méabh Begley Trio PLUS SUPPORT Faye Swindell</b>	7:30pm	Choppards Mission	16
<b>Saturday 17th June (MUSIC)</b> <b>Hade Edge Band</b>	12:15pm & 3:30pm	Outside Picturedrome	9	<b>Saturday 29th July (SPOKEN WORD/THEATRE)</b> <b>Moby Dick BY GRIST TO THE MILL &amp; Ryan Tomlin</b>	7:30pm	Hade Edge Band Room	17
<b>Saturday 17th June (PARADE)</b> <b>Forces of Nature Parade BY HANDMADE PARADE</b>	2pm	See p.25 for the parade route	9	<b>Sunday 30th July (WALK)</b> <b>Graveship of Holme Walk</b>	10am–1pm	Park corner of Cartworth Rd and White Gate Rd	18
<b>Saturday 17th &amp; (MUSIC/INSTALLATION) Sunday 18th June</b> <b>Sound Scenes by Ellie Ford STEVE SYKES COMMISSION 2023</b>	3:45pm (Sat), 1pm & 3:45pm (Sun)	Duck Feeding Area, Crown Bottom	10	<b>Saturday 2nd September (MUSIC)</b> <b>Hallam Sinfonia</b>	7:30pm	Christ Church, New Mill	19
<b>Sunday 18th June (MUSIC)</b> <b>Holmfirth Bells</b>	11:30am	Ringling from the Parish Church	12	<b>Sunday 3rd September (WALK)</b> <b>A Story Walk Around Holme WITH HOLMFIRTH WRITER'S GROUP</b>	11:30am–12:45pm	Meet in Holme Village Car Park	19
<b>Sunday 18th June (MUSIC)</b> <b>Pressure Drop</b>	12noon & 2:15pm & 4:15pm	Holmside Gardens	12	<b>Saturday 23rd September (MUSIC)</b> <b>Hepworth Band PLUS SUPPORT Cafe Orchestra</b>	7:30pm	St David's Hall, Holmbridge Church	20
<b>Sunday 18th June (CARNIVAL/THEATRE)</b> <b>Mersquerade BY CALLALOO CARNIVAL ARTS</b>	12:15pm & 3:15pm	Holmside Gardens	13	<b>Sunday 24th September (WALK)</b> <b>Washpits and Mills</b>	11am–12:30pm	Meet at Washpit Mill Carding Shed Car Park	20
				<b>Saturday 7th October (COMEDY)</b> <b>Sixty Plus! (FFS!) BY Jenny Eclair</b>	7pm	Holmfirth Civic Hall	21
				<b>Friday 13th October (LANTERN PARADE)</b> <b>Light Up Honley BY STAR IN THE SKY CEREMONIES PLUS THE GOOD EARTH COLLECTIVE</b>	6:30pm	Venue TBC	21

\*ALL DETAILS CORRECT AT TIME OF GOING TO PRINT BUT MAY BE SUBJECT TO CHANGE

## Events

### EXHIBITION

Monday  
1st May –  
Mon 30th  
October  
During Co-op  
opening hours

Co-op  
Coffee Shop,  
Market Street,  
Holmfirth  
HD9 7AX

FOR ACCESS  
DETAILS  
SEE P.24

FREE

## Forces of Nature – From Industry to Culture

BY HOLME VALLEY  
U3A DIGITAL  
PHOTOGRAPHY GROUP

Photographs celebrating industrial, post industrial and pastoral landscapes as well as leisure activities in the Holme Valley, from well-known beauty spots to tucked away gems, taken by local people who know the valley in its seasonal glory.



© Vince Cunningham

Commissioned by Holmfirth Arts Festival with support from  
Holmfirth Co-operative

### WALK

Wednesday  
17th May  
11:30am–1:30pm

Meet entrance to  
Queens Sq.  
Business Park,  
Honley  
HD9 6QZ

FREE Donations  
welcome –  
tickets must be  
pre-booked

## Accessible Activities Amble

An accessible walk for people with mobility issues and/or disabilities, their carers and families – wheelchairs welcome.

Amble along Magdale's beautiful riverside. Enjoy music and creative activities inspired by this wonderful nature reserve. Relax under a large gazebo with free light refreshments or bring your own packed lunch.

There is no charge for this event, but booking is essential as numbers are limited. For more information please contact [access@holmfirthartsfestival.co.uk](mailto:access@holmfirthartsfestival.co.uk)



### MUSIC

Saturday  
20th May  
7:30pm

Brockholes  
Village Hall,  
Brockholes Lane  
HD9 7EB

FOR ACCESS  
DETAILS  
SEE P.24

TICKETS:  
£17/ £15 conc./  
U16 £8.50

## Holmfirth Arts Festival 2023



© Baz Graham

## Kyla Brox with Dan Blomeley PLUS SUPPORT TOBY COOPER

Award-winning singer-songwriter, and daughter of cult blues figure, Victor Brox, Kyla Brox's raw talent has seen her described as "the finest female blues singer of her generation". Winner of the UK Blues Challenge 2018 and the European Blues Challenge 2019, voted Best Female Vocalist in the 2019 European Blues Awards and semi-finalist in the International Blues Challenge 2019 and 2020, Kyla Brox is at the very top of the UK Blues scene.

Kyla plays Holmfirth in duo form with her husband, virtuoso acoustic guitarist, **Danny Blomeley**, whose playing, by turns delicate and unrestrained, has earned him a following in his own right.

*"Manchester's answer to Aretha Franklin"* Tony Wilson,  
Factory Records

*"An authentic soul diva... sensitive, sexy, and with infinite reserves of sassiness"* City Life

## Festival Weekend Events – 17th & 18th June

### INSTALLATION

Saturday  
17th–Sunday  
25th June  
10am–4pm

Earthworks New  
Mill Community  
Gardens,  
Sude Hill,  
New Mill  
HD9 7BL

FOR ACCESS  
DETAILS  
SEE P.25

FREE  
Donations  
welcome



### Art in the Landscape CURATED BY SARAH BRANSON

Join us for a beautiful and eye-catching community co-created art trail through the community garden in New Mill overlooking the rolling Holme Valley hills curated by **Sarah Branson** and hosted by **Friends of Earthworks New Mill Community Garden**. Participating artists and groups include: **Mick Kirby Geddes**, **Stephanie Bartholet**, **Meltham C of E School**, **fairandfunky** working with **Holme Valley Scouts**, **Globe Arts** working with **Young Arts Class**, **Rachel Smith** working with **New Mill Schools** and **Marion Robinson** working with **Common Threads**.

Further opportunities to participate in arts and wellbeing activities will be available whilst the installation is in place. For more information visit [www.holmfirthartsfestival.co.uk/participate](http://www.holmfirthartsfestival.co.uk/participate). *Commissioned by Holmfirth Arts Festival*

## Holmfirth Arts Festival 2023

### MUSIC

Saturday  
17th June  
12noon–5pm

Holmside  
Gardens,  
Holmfirth  
HD9 1AB

FOR ACCESS  
DETAILS  
SEE P.24

FREE  
Donations  
welcome

### Music Garden Party

FEATURING **BANDA NA RUA**, **CAFE ORCHESTRA**,  
**FRETMATES**, **ABILITY OPTIONS** AND **SOUL CHOIR**

A day of music in the park featuring community music makers from across the Holme Valley and participants of music making sessions with **Josh Haslam** of **Jam Factory**.

### Mission to Mend: A TEXTILE REPAIR WORKSHOP

Join **WOVEN** in Kirklees for a textile repair workshop in Holmside Gardens, teaching basic hand sewing techniques for garment repair including sewing on a button, embroidery for visible mending and backstitch for repairing seams.

**Drop in workshop. All materials provided.**



## Festival Weekend Events – 17th & 18th June

### INSTALLATION

**Saturday 17th & Sunday 18th June**  
**12noon–5pm**

Methodist Church Gardens, 104 School St, Holmfirth HD9 7EQ

**FOR ACCESS DETAILS SEE P.24**

**FREE**  
Donations welcome

## Instruments of Light Dependent Vibration BY CHRIS RUFFONI

Suspended from tree branches, these unique, mechanical, acoustic musical instruments respond in real time to the environment they inhabit, creating an immersive, contemplative and organically shifting texture of sound.



Inspired by nature, Chris works with sound, music, sculpture and installations in which he combines musical instruments with his designs of chaotic-mechanical systems and combines them with musical instrument design to create sculptural works for installation, indoor/outdoor, and performance.

### AERIAL DANCE

**Saturday 17th June**  
**12noon & 3:15pm**

Outside Picturedrome, Market Walk, Holmfirth HD9 7DA

**FOR ACCESS DETAILS SEE P.24**

**FREE**  
Donations welcome

## Flamin' Nora Flying Compo BY URBAN ANGELS

*Last of the Summer Wine* characters and national icons, Nora Batty, in her wrinkled stockings and Compo, in his woolly hat and wellies, make an unexpected re-appearance 50 years after the TV programme first aired.



What heights will Compo go to pursue his muse? Will his ardent admiration finally blossom or will it all come crashing down?

Vertical aerial dancers Vince Virr and Deborah Sanderson, make a light hearted and daring nod to the world's longest running sitcom, filmed in Holmfirth between 1973 to 2010.

**Commissioned by Holmfirth Arts Festival**

## Holmfirth Arts Festival 2023

### MUSIC

**Saturday 17th June**  
**12:15 & 3:30pm**

Outside Picturedrome, Market Walk, Holmfirth HD9 7DA

**FOR ACCESS DETAILS SEE P.24**

**FREE**  
Donations welcome

## Hade Edge Band

Award-winning Hade Edge Band, with a history spanning more than 112 years and boasting a rich heritage, perform the brass band classics and marches, local tunes and upbeat tunes, as well as innovative new and dynamic arrangements from a variety of composers.



Situated in the village of Hade Edge on the tops of Holmfirth, members are mostly Holme Valley born and bred and promise a vibrant and exciting performance as part of Festival Weekend.

### PARADE

**Saturday 17th June**  
**2pm**

**SEE P.25 FOR PARADE ROUTE**

**FREE**  
Donations welcome

## Forces of Nature Parade

Handmade Parade, working with communities across the valley, creates a magical, inclusive and exciting parade through the streets of Holmfirth Town Centre. The Parade imagines the people, places and landscapes of the Holme Valley as they have changed from an industrial past to bringing joy, leisure and wellbeing to the people of today.



**Commissioned by Holmfirth Arts Festival**

## Festival Weekend Events – 17th & 18th June

### INSTALLATION & MUSIC

Saturday 17th  
June 3:45pm  
Sunday 18th  
June 1pm &  
3:45pm

Duck  
Feeding Area,  
Crown  
Bottom

FOR ACCESS  
DETAILS  
SEE P.24

FREE  
Donations  
Welcome



### Sound Scenes BY ELLIE FORD

Born in Huddersfield and with fond memories of regular walks in the Holme Valley with family, Ellie Ford brings a live performance of harp, vocals and electronics set against an installation of cassette tape loops playing ambient sounds and tales collected from the local people. Within Ellie Ford's performance the natural environment is recorded, deconstructed and then reconstructed again within the natural elements of the Holme Valley.

Ellie's passion lies in exploring non-traditional uses of the harp, augmenting harp with electronic elements, singing and vocals.

*Sound Scenes* is sited sensitively by the riverside in Holmfirth Town Centre, developing Ellie's strong DIY ethic and her passion for the natural landscape.

Steve Sykes Commission for New Music in the Landscape



In 2023, Kirklees is the place to hear world class music from brass bands to bhangra, singer-songwriters to school choirs, the best in jazz and folk, to music theatre and orchestras.

From festivals in parks and town squares, concerts in churches and Town Halls, bands in independent venues and surprising events popping up in hills and valleys, join us for Kirklees Year of Music.



Supported using public funding by  
**ARTS COUNCIL  
ENGLAND**



## Street Performance – Sunday 18th June

### MUSIC

11:30am

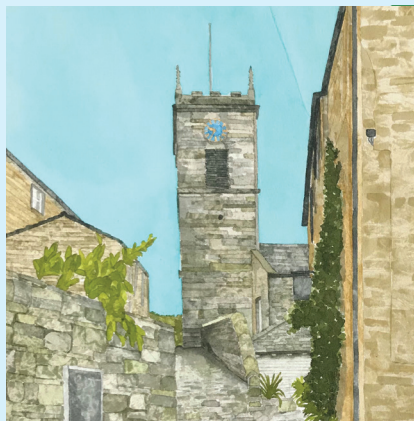
Ringling from the Parish Church

**FREE**

Donations Welcome

### Holmfirth Bells

For the last 30 years the church bells in the centre of Holmfirth have been silent. Newly repaired and with a thriving band of ringers, young and old, the bells are speaking again. Come and listen to the magnificent 8-bell ring with the tenor weighing 12 cwt tuned to F-sharp.



### MUSIC

12noon, 2:15pm & 4:15pm

Holmside Gardens, Holmfirth HD9 1AB

**FOR ACCESS DETAILS SEE P.24**

**FREE**

Donations Welcome

### Pressure Drop

Pressure Drop is a five piece street reggae brass band from Manchester featuring a tuba, Alto sax, trombone, melodica, voice, drums and percussion. Rocking the streets with a deep groove, lifting the vibes, sharing the love and bringing smiles and joy wherever they play.



Pressure Drop perform regularly outdoors, at festivals, street gigs and celebrations.

### THEATRE

12:15pm & 2:30pm

Starts Picturedrome, Holmfirth, HD9 7DA then promenades to Holmfirth Parish Churchyard, Towngate HD9 1HA

**FOR ACCESS DETAILS SEE P.24**

**FREE**

Donations Welcome

### FreeFall BY URBAN ANGELS – INDOORS, OUTDOORS AND IN THE AIR

Can the scientist and their son escape their sticky fate by using the wax and feather wings created by clever scientist Daedalus?



Inspired by the Greek myth Daedalus and Icarus, this new work by Urban Angels with Vince Virr, explores themes of parenthood, self confidence and underestimating the power of nature.

The performance begins in the Picturedrome, promenades through the town and ends at the Parish Church.

The performance uses flashing lights. Indoor section of the performance in the Picturedrome is not suitable for children under 14.

*Commissioned by Holmfirth Arts Festival*

### CARNIVAL/ THEATRE

12:15pm & 3:15pm

Holmside Gardens, Holmfirth HD9 1AB

**FOR ACCESS DETAILS SEE P.24**

**FREE**

Donations Welcome

### Mersquerade BY CALLALOO CARNIVAL ARTS

Callaloo Carnival Arts presents new work about identity, imagination, freedom and belonging.



Inspired by Merfolk and Myths, informed by hidden truths from the ocean depths and enriched by colours of coral reefs, Mersquerade is full of fun, frivolity and of course, fish!

When not celebrating all things carnival, the group designs creative activities with a positive impact, working with individuals and in community, health and education settings.



## THEATRE

1pm &  
3:45pm

Holmside  
Gardens,  
HD9 4AA

2pm

Holmfirth Parish  
Churchyard  
HD9 1AB

**FOR ACCESS  
DETAILS  
SEE P.24**

**FREE**

Donations  
Welcome

## To Be Us BY DARK HORSE THEATRE

To Be Us asks: “If we were given the chance to start again, what would we change?”

Rooted in physical storytelling and driven by a classical score, To Be Us explores the importance of ‘us’ and the value of connection to both people and planet.

Based in Huddersfield, Dark Horse has a reputation for creating poignant and entertaining street theatre that dramatically reverses damaging preconceptions of people with learning disabilities.

The company makes bold, progressive and visually impactful work with creatives who have learning disabilities and trains actors to work professionally in TV, theatre and film.



## WALKABOUT

1:15pm &  
3:30pm

Holmside  
Gardens  
(Roaming),  
Holmfirth  
HD9 1AB

**FOR ACCESS  
DETAILS  
SEE P.24**

**FREE**

Donations  
Welcome

## Butterflies BY NEIGHBOURHOOD WATCH STILTS INTERNATIONAL

Close copies of nature, the Butterflies encourage urban dwellers to make relationships and learn about these endangered denizens of the air.

The Butterflies spread the philosophy that no one has to do things... it is perfectly adequate to simply float about sipping nectar and being beautiful.

Come and meet them as they explore Holmfirth.



## THEATRE

1:30pm &  
4:30pm

Towngate  
Car Park,  
Holmfirth  
HD9 1HA

**FOR ACCESS  
DETAILS  
SEE P.24**

**FREE**

Donations  
welcome



## Flood BY THEATRE TÉMOIN

It's 2030, the world's oceans have become volatile, dangerous and unable to sustain life. Three strangers meet on the high seas. A storm is coming.

FLOOD is a new, interactive outdoor spectacle. Using circus, music and acrobatics, FLOOD takes you on an epic adventure to understand how our coastline and communities have become 'seasick'. Standing under your own personalised 'sound umbrella', FLOOD will take you far beyond your front door and into the eye of the storm.

FLOOD is a watery acrobatic adventure that makes a splash (literally). The show is fully BSL integrated.

## PARTICIPATE

Saturday  
1st July  
1pm–5pm

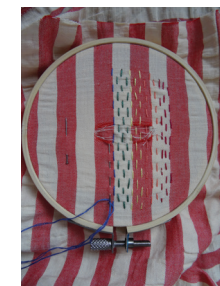
Venue TBC

**FREE**

Donations  
welcome

## Mission to Mend A COMMUNITY CELEBRATION OF STITCH

Join WOVEN in Kirklees to celebrate all things stitch in Holmfirth! Workshops, demonstrations, talks, exhibitions, music and more celebrating the many ways in which sewing is important in our lives and exhibiting the Mission to Mend garment repair samples made by Holmfirth residents in community stitch workshops.



## WALK

### A Story Walk around Holme Village WITH HOLMFIRTH WRITER'S GROUP

**Sunday**  
**9th July &**  
**3rd September**  
**11:30am–**  
**12:45pm**

Holme Village  
Car Park, corner  
of Meal Hill Rd &  
Woodhead Rd  
HD9 2QG

**TICKETS:**  
Adults £10/  
U16 Free

A family friendly half mile stroll around the village of Holme with storytelling and music along the way, and a piece of cake at the end.

Meet the mythical Green Man, the wicked Morrigan and characters from Holme's past, including a stonemason, Roman soldier, Luddite widow and Victorian inventor.

Please book a free ticket for U16s who must be accompanied by an adult.

**The route goes through a field and allotments so not suitable for wheelchairs or pushchairs.**



## THEATRE/ SPOKEN WORD

**Saturday**  
**29th July**  
**7:30pm**

Hade Edge  
Band Room,  
56 Greave Rd,  
Hade Edge,  
Holmfirth  
HD9 2AQ

**FOR ACCESS  
DETAILS  
SEE P.25**

**TICKETS:**  
£17/ £15 conc./  
U16 £8.50

## SPECIAL FESTIVAL DOUBLE BILL

### Ryan Tomlin PERFORMANCE POET

**Ryan Tomlin** is a poet and street-performer, from Leeds. Ryan has a repertoire of more than 50 original poems, spanning topics such as hope, love, loss, mental health, comedy/nonsense poetry and more personal to him, the pursuit of passions - chasing dreams.

He has performed at festivals and 'An Evening of Authors for Men's Mental Health'. He has also featured on the *EPOCH* documentary series *PEOPLE*, as well as *BBC Yorkshire*, *BBC Two's Politics Live* and poetry podcasts.



## Moby Dick

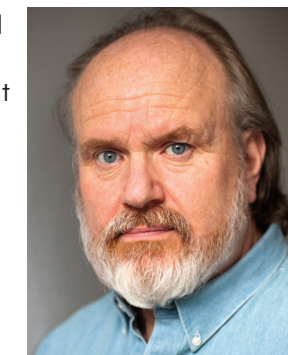
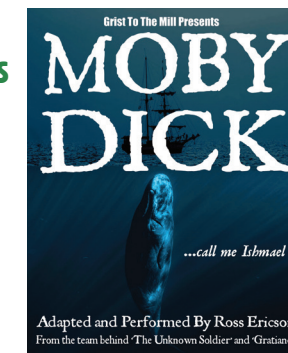
### BY GRIST TO THE MILL PRODUCTIONS

**Ross Ericson's** sensational solo show brings the American Classic of *Moby Dick* to life.

Ericson is the writer and performer behind the hit sell out show *The Unknown Soldier* and the critically acclaimed *Gratiano*.

'It was a very difficult task' admits Ericson, 'to condense one hundred and thirty five chapters into a single hour, without losing the meaning, the subtext and the language. I think I have done it justice – it is such a fabulous story.'

*Moby Dick* is a story that is almost biblical in its proportions. It tells a tale of deep friendship, great courage and more than just a little bit of luck.



## MUSIC

### The Méabh Begley Trio PLUS SUPPORT FAITH SWINDELL

**Friday**  
**28th July**  
**7:30pm**

Choppards  
Mission,  
Choppards  
Bank Road,  
Holmfirth  
HD9 2DY

**FOR ACCESS  
DETAILS  
SEE P.25**

**TICKETS:**  
£17/ £15 conc./  
U16 £8.50

Formed from the rich musical traditions of vocalist Méabh's Irish homeland, the Méabh Begley Trio (aka The Weaving) brings us fierce dance music and raw harmonies from their home region of Corca Dhuibhne, in southern Ireland.

Learned around kitchen tables and in pubs, their musical expression springs from the Irish Gaelic speaking areas of West Kerry, influenced by the rugged landscape and a deep understanding of the Irish language.

Méabh performs globally with groups such as acclaimed Irish band Téada and The Pure Irish Drops.

Line up: Méabh Begley (The Sibin Orchestra) on button accordion, Owen Spafford on fiddle and Cáit Ní Riain on piano.



## Events

### WALK

**Sunday**  
**30th July**  
**9:50am for a**  
**10am start**

Park close to the junction of Cartworth Moor Rd and White Gate Rd, Holmfirth HD9 2QS

**TICKETS:**  
Adults £10/  
U16 Free



### Graveship of Holme Walk

This rugged moorland walk, high above Hade Edge, includes magnificent views over the Graveship of Holme and offers entertainment along the way.

The Graveship of Holme, comprises seven townships, Holme, Austonley, Upperthong, Wooldale, Fylstone, Hepworth and Cartworth. At one time each township had its own constable, but with the development of the modern police force these have disappeared. However, the chief constable role has survived, being charged with the overview of the whole Graveship and the administration of various matters including overseeing England's last active turbarry – a turf and peat digging area – at Cooke's Study, near Holmfirth.

Holmfirth's Jimmy Dickinson, the owner of Longley Farm and entrepreneur, is currently the elected Chief Constable of the Graveship of Holme. He is a supporter of many Holme Valley projects, including Holmfirth Arts Festival and the generation of electricity from the community wind turbine sited at Longley.

Please book a free ticket for U16s who must be accompanied by an adult.

**The three-mile hill walk will take about three hours and walking boots are strongly recommended. Dogs are not allowed on the grouse moor.**

### MUSIC

**Saturday**  
**2nd September**  
**7:30pm**

Christ Church,  
Sude Hill,  
New Mill  
HD9 7ER

**FOR ACCESS**  
**DETAILS**  
**SEE P.24**

**TICKETS:**  
£17/ £15 conc./  
U16 £8.50



### Hallam Sinfonia

Players from Hallam Sinfonia and harpsichordist Gordon Busbridge (Director of Music at Cheltenham College) join forces to present chamber music by the legends of baroque music: Bach, Vivaldi, Corelli, and Handel.

Set up as a chamber orchestra more than 40 years ago, the Hallam Sinfonia repertoire extends from the baroque to the 21st century, including large-scale romantic works, and from mainstream classics to film music and children's concerts. They make their Holmfirth debut with a select group of string players under the direction of Gordon Busbridge.

### WALK

**Sunday**  
**3rd September**  
**11:30am-12:45pm**

Holme Village  
Car Park, corner  
of Meal Hill Rd &  
Woodhead Rd  
HD9 2QG

**TICKETS:**  
Adults £10/  
U16 Free

### A Story Walk around Holme Village WITH HOLMFIRTH WRITER'S GROUP

A family friendly half mile stroll around the village of Holme with storytelling and music along the way, and a piece of cake at the end.

Meet the mythical Green Man, the wicked Morrigan and characters from Holme's past, including a stonemason, Roman soldier, Luddite widow and Victorian inventor.

Please book a free ticket for U16s who must be accompanied by an adult.

**The route goes through a field and allotments so not suitable for wheelchairs or pushchairs.**

## Events

### MUSIC

**Saturday**  
**23rd September**  
**7:30pm**

St David's Hall,  
Holmbridge  
Church,  
Woodhead Rd,  
Holmbridge,  
Holmfirth  
HD9 2NQ

**FOR ACCESS  
DETAILS  
SEE P.25**

**TICKETS:**  
£10/ £8 conc./  
U16 £5

## Hepworth Band

**PLUS SUPPORT  
CAFE ORCHESTRA**

Hepworth Band formed in 1882, making it one of the oldest brass bands in the country. There has long been a tradition of brass bands and music making in the Holme Valley and Hepworth has been a part of this, with notable contest success maintaining its Championship status for more than 20 years.

The band is to perform a specially selected programme reflecting the festival theme *Forces of Nature*.



### GUIDED WALK

**Sunday**  
**24th September**  
**11am-12:30pm**

Meet at  
Washpit Mill at  
the Carding  
Shed Car Park,  
Green Lane,  
Holmfirth  
HD9 2RD

**FOR ACCESS  
DETAILS  
SEE P.25**

**TICKETS:**  
Adults £10/  
U16 Free

## Washpit and Mill Walk

Discover hidden gems on this four mile circular heritage walk from Washpit to Holmfirth and back. Hear about historic textile mills, some still in use, but many long gone or repurposed.

Listen to stories of what it was like to work in the mills and enjoy the music and entertainment as you walk along the Ribble, which is England's shortest river.

Please book a free ticket for U16s who must be accompanied by an adult.

**A moderate walk of 3-4 miles with some steep bits and some mud. Pushchair friendly. Wear suitable footwear.**



### COMEDY

**Saturday**  
**7th October**  
**7pm**

Holmfirth  
Civic Hall,  
Huddersfield Rd,  
Holmfirth  
HD9 3AS

**FOR ACCESS  
DETAILS  
SEE P.24**

**TICKETS:**  
£22/ £19 conc.

## Holmfirth Arts Festival 2023



## Jenny Eclair – Sixty Plus! (FFS!)

Having hit 60 (but still a year younger than Madonna), Jenny Eclair AKA 'The Face of Vagisan' confronts a new decade of decrepitude. Now that it takes 20 minutes of scrolling down to find her DOB when she's filling in forms online, should she celebrate or crawl into a hole? What will her 60's hold for this 1960's babe and is it a legal requirement to buy Nordic walking poles?

This popular British comedian, actress and novelist is known for her role in Grumpy Old Women (2004-07) She has been a stand-up comic for donkeys' years, she was the first woman to win the coveted Perrier Award at the Edinburgh festival in 1995 and hasn't stopped banging on about it ever since.

Since then she has also found fame as the author of five critically acclaimed novels. ***This show is part of her extended nationwide tour.***

### LANTERN PARADE

**Friday**  
**13th October**  
**6:30pm**

Venue TBC

**FREE**  
Donations  
Welcome

## Light Up Honley BY STAR IN THE SKY CEREMONIES & THE GOOD EARTH COLLECTIVE

Join in the fun by making a lantern and walking with local school children and their families in a starry lantern parade, with live music through the streets of Honley. Enjoy a finale with an uplifting and heart-warming performance of *The River Flows*, a new song cycle from The Good Earth Collective.

Go to [www.holmfirthartsfestival.co.uk/participate](http://www.holmfirthartsfestival.co.uk/participate) for more information.

# About Holmfirth Arts Festival



Holmfirth Art & Music Ltd formed in 2007 (incorporated in March 2010) with the aim of supporting and encouraging the development of art and music in Holmfirth and the Holme Valley. It is a company limited by guarantee and a registered charity.

Its major project is the annual Holmfirth Arts Festival – one of Yorkshire’s best small festivals, attracting thousands of people each year.

The festival includes an extensive community engagement programme and, since 2022, an extended programme from May through to October, programming events in rural venues and outdoor spaces across the Holme Valley.

Holmfirth Arts Festival celebrates creativity in the landscape by:

- **Commissioning new work and supporting diverse artists**
  - **Inspiring diverse communities to engage with the arts and their heritage**
  - **Caring for the environment**
  - **Connecting locally, regionally and internationally**
- Our **values** underpin how we work across all aspects of our organisation, including programming, and how we work with each other:
- **Nurturing CREATIVITY in all forms**
  - **CELEBRATING people and place**
  - **CARING for each other and our environment**
  - **CONNECTING people to each other and to the places they live**

## Get involved...

If you would like to get involved with the festival as a volunteer, we would love to hear from you. There are opportunities to join the friendly festival team, who help all year round with events and fundraising, or volunteer to work on specific events.

Whatever your availability, skills and interests we can offer you a rewarding and fun experience. Email **manager@holmfirthartsfestival.co.uk** to find out how you can get involved or speak to one of our volunteers during the festival.

## A BIG THANK YOU!

Many people give their time and talent to make this festival happen and we are indebted to every single one of them. Thanks to all those who came to help after the programme went to print and apologies in advance to anyone we may have missed off this list:

*Kirklees Year of Music, Fairtrader, Alex Greenwell, Holmfirth Cooperative, Earthworks New Mill Community Garden, Andy Leader, Phil Hack, Holme Valley U3A Digital Photography Group, Holmfirth Civic Hall, Holmfirth Parish Church, Holmfirth Library, Holmfirth Methodist Church, Honley Village Community Trust, Kirklees Council, Kerry Sykes and Creative Kirklees.*

## Involvement & Support

### THANKS TO OUR SPONSORS AND FUNDERS

*Bike Shed Digital Media, Holme Valley Parish Council, Creative Minds, One Community, Kirklees Council, National Lottery Heritage Fund, Longley Farm and Arts Council England.*

### THE FESTIVAL WOULDN'T HAPPEN WITHOUT...

#### The Core Team

*Bev Adams: Festival Director  
Lucy Dugate: Festival Manager  
Alison Bellamy: PR & Marketing Manager  
Lucy Brown: Social Media  
Jo Rose Brewerton: Access & Inclusion Liaison  
Eva Taylor: Graphic Design  
Andrea Fanchette: Evaluator  
John Coombes: Videographer  
Phil Hack: Photographer  
John Haslam: Sound & Light Production (indoor events)  
Gary Lingard: Sound Production (outdoor events)  
Stuart Robertshaw: Safety Officer  
Andy Leader: Landscape Photographer*

#### Board of Trustees

*Sara Bradley (Vice Chair), Kate Buchanan, Dave Calvert, Roger Lancaster (Chair), Grant Lowe, Barbara Lawson (Company Secretary), Jill Martin, Sarah Mason-Dixon*

#### Supporters

*Caroline Anstey, Greta Bradley (Co-Chair of Supporters), Sally Brown, Sue Clarke, Rose Cuthbertson, Ali Deering, Chris Deering, Andrea Fanchette, Hilary Fletcher, Sandy Goler, Phil Hack, Beverley Haynes, Liz Heywood, Jenny Holmes, Alison James, Jacob Mason-Dixon, Jack Milnes, Lynne Onyski, Elaine Park, Penny Peters, Angela Rosenfield, Rachel Smith, Lesley Sykes. (Co-Chair of Supporters), Diana Woodhead and Deb Wyles.*

# Venue, Access & Booking Information

We aim to make our Festival as accessible and enjoyable for as many people as possible.

A Large Print version and a Word version of this programme are available.

Holmfirth has some narrow streets, steps and cobbles in places and it can be difficult for people with limited mobility to get around. Most of the venues for outdoor arts events are accessible by wheelchair. There are limited seats in the outdoor spaces.

Comprehensive access information, including a video of a walk around the town and access to Personal Assistant tickets for ticketed/indoor events, is available on our website: <https://www.holmfirthartsfestival.co.uk/your-visit>. Or click on the QR Code below.



To request chairs, large print programmes or to discuss your access requirements, including British Sign Language Interpretation and Audio Description, please email ahead of the festival to: [access@holmfirthartsfestival.co.uk](mailto:access@holmfirthartsfestival.co.uk)

## ARRIVAL & PARKING

The BUS STATION is central – a 10 minute walk to most town centre venues. It is just off the A635 with regular buses from across the Holme Valley, Wakefield, Huddersfield, Sheffield, Ashton under Lyne, Glossop, Penistone and Barnsley.

Long Stay PARKING is at Crown Bottom car park at HD9 3HW, which costs £4 a day Monday to Sunday 8am-4pm. Parking is free for Blue Badge holders. Short Stay parking at Town Gate is closed for the Festival on Sunday.

## HOLMFIRTH TOWN CENTRE VENUES

### 1 Holmfirth Co-Op Coffee Shop

Market Street, HD9 7AX  
Accessible toilet, disabled drop off, parking

### 2 Methodist Church Gardens

104 School St, Holmfirth, HD9 7EQ  
Accessible toilet inside the church

### 3 Holmfirth Civic Hall

Huddersfield Road, HD9 3AS  
Accessible toilet, disabled drop off, parking at Crown Bottom, ramped access

### 4 Holmfirth Parish Churchyard

Towngate, HD9 1HA  
Accessible toilets on Towngate and The Old Bridge Hotel. Parking at Crown Bottom, steep ramped access

### 5 Towngate car park

Towngate, HD9 1HA  
Accessible toilets on Towngate and The Old Bridge Hotel. Parking at Crown Bottom

### 6 Holmside Gardens

New Mill Road, HD9 1AB  
Accessible toilets on Towngate, The Old Bridge Hotel and the Co-op, parking at Crown Bottom, steep ramped access

### 7 Duck Feeding Area

Crown Bottom  
Stepped access. Parking at Crown Bottom

### 8 Picturedrome

Market Walk, Holmfirth, HD9 7DA  
Accessible toilet, disabled drop off, parking at Crown Bottom

## HOLME VALLEY VENUES

### Brockholes Village Hall

Brockholes Lane, HD9 7EB  
Accessible toilet, disabled drop-off, roadside parking

### Christ Church

New Mill, HD9 7ER  
Roadside parking, ramped access to building, accessible toilets and lift

## Choppards Mission

Choppards Bank Road, HD9 6LU  
Stepped access (please contact us for access assistance), roadside parking

## Earthworks Community Garden

Sude Hill, New Mill, HD9 7BL  
Compost toilet on site. Accessible toilets at Christ Church, steep inclines, roadside parking Christ Church, New Mill, HD9 7ER

## Hade Edge Band Room

56 Greave Rd, Hade Edge, HD9 2AQ  
Accessible toilet, disabled parking, parking, ramped access

## St David's Hall, Holmbridge Church

Woodhead Rd, Holmbridge, HD9 2NQ  
Accessible toilet, parking

## Magdale Dam

Honley, HD9 6LU  
No toilets, flat paths around dam, some gravel, parking at nearby business parks

## The Carding Shed

Washpit Mills, Green Lane, HD9 2RD  
Accessible toilet, parking

## LOST PROPERTY

Ask a volunteer at the festival for help or after the event contact [manager@holmfirthartsfestival.co.uk](mailto:manager@holmfirthartsfestival.co.uk)

## HOW TO BOOK ONLINE

[www.holmfirthartsfestival.co.uk/what-s-on](http://www.holmfirthartsfestival.co.uk/what-s-on)

# Map of Holmfirth





holmfirth  
arts festival

**DONATE** Every penny you donate goes towards bringing the best artists and arts activities to the Holme Valley. For more information about how to support us go to: [www.holmfirthartsfestival.co.uk/supportus](http://www.holmfirthartsfestival.co.uk/supportus). **To donate £10, TEXT HAF2023 to 70191**



Fundraising, payments and donations will be processed and administered by the National Funding Scheme (Charity No: 1149800), operating as DONATE. Texts will be charged at your standard network rate. For Terms & Conditions, see [www.easydonate.org](http://www.easydonate.org)

Holmfirth Arts Festival is a company registered in England as Holmfirth Arts and Music Ltd – company number 7198613.  
Holmfirth Arts Festival is a charity – registration number 1141623.

All products used in this programme are from sustainable sources.