

How to book tickets

Many of our events last year were sold out so please book your tickets in advance as we cannot guarantee that tickets will be available on the door. There are three easy ways to book:

In person

At the Tourist Information offices in Holmfirth, Huddersfield, Dewsbury or Cleckheaton

By telephone

Ring Holmfirth Tourist Information Centre 01484 222444 or Kirklees booking line on 01484 223200.

Online at

www.holmfirthartsfestival.co.uk/book-tickets

Concessions

Concessions are available to the following people, with proof of status:

- Under 16s
- People in receipt of a means-tested benefit or Personal Independence Payments
- Students

Early bird offers



£2 off per ticket for events booked by 31 May where you see this symbol



www.holmfirthartsfestival.co.uk

F HolmfirthArtsFestival

T@HolmfirthARTS #Holmfirth2014

Holmfirth Arts Festival is a company registered in England as Holmfirth Art and Music Ltd, company number 7198613. Holmfirth Arts Festival is a charity, registration number 1141623

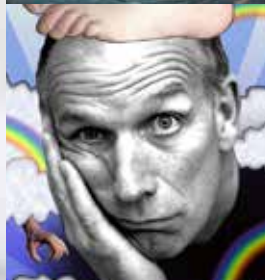


holmfirth
arts festival

12 to 22 June 2014

www.holmfirthartsfestival.co.uk

Festival Highlights



Welcome

... to **Holmfirth Arts Festival 2014**, where we're inviting you on a journey of the imagination. The 2014 Festival celebrates and interacts with the landscapes which have shaped the town's history - our exhibitions, walks and talks explore Holmfirth's vital connections with water, as well as marking the 70th anniversary of the 1944 floods. Two very different commissions by Holmfirth artists **John Holt** and **Fabric Lenny** will encourage us to look at the River Holme afresh, and we want you to come on a new journey with us through Holme Styes woods as we invite you to the 2014 edition of **Art in the Woods**.

As well as a real feast of arts events to enjoy, ranging from theatre to comedy, music to storytelling, this year we're encouraging all our audience members to take part. Our two community Sundays will celebrate the imminent arrival of the Grand Départ of the Tour de France, so please join us in creating the Yorkshire premiere of **Kagel's Eine Brise (A Breeze)** on your bike! We need 111 cyclists to create the first ever complete performance of the piece on Sunday 15 June, followed by a Holmfirth Sing in Victoria Park, reprising a Holmfirth tradition. Hope & Social bring its **Tour of Infinite Possibility** to Holmfirth on Sunday 22 June - it's a band anyone can join...

So join us and join in! Follow the swallow to find us in June.

FIONA GOH
Festival Director

Get the latest news
and updates through
Facebook and Twitter



HolmfirthArtsFestival



@HolmfirthARTS
#Holmfirth2014



Festival Diary

ART IN THE WOODS

Fri 13 - Sun 22 June
All day
Holme Styes Reservoir

page 6

FIELDS OF VISION

Sat 14 - Sat 21 June
See listing
Barn@Malkin House

page 6

FLOW

Thu 12 - Sun 22 June
All day
Holme River next to Holmfirth Mills

page 7

A WALL OF WATER

Thu 12 - Sun 22 June
Helen Bray Studio

page 8

FESTIVAL LAUNCH

Thu 12 June
7.30pm
Helen Bray Studio

page 8

MONDAY'S CHILD

Fri 13 June
4.30pm
Holmfirth Methodist Church

page 9

FIRM OF POETS

Fri 13 June
4pm & 7.30pm
Carniceria and Cellar 88

page 10

ANCIENT WATERS

Fri 13 June
10pm & 10.30pm
Holme River, Crown Bottom car park

page 11

ART IN THE WOODS WALK

Sat 14 June
10am
Holme Styes Reservoir

page 12

IMAGINARIUMS

Sat 14 June
2pm-4pm
Holy Trinity Church, Holmfirth

page 12

CAPE WRATH

Sat 14 June
2pm & 5pm
Old Bridge Hotel car park

page 13

ARUN GHOSH

Sat 14 June
8pm
Holmfirth Civic Hall

page 14

EINE BRISE (A BREEZE)

Sun 15 June
12pm & 2pm
Holmfirth Town Centre

page 15

HOLMFIRTH SING

Sun 15 June
3pm
Victoria Park

page 16

1944 FLOOD WALK

Sun 15 June
5.30pm
Meet in Victoria Park

page 16

I BELIEVE IN UNICORNS

Mon 16 June
4.30pm
Holmfirth Methodist Church

page 17

FLOW & HOLMFIRTH WRITERS' GROUP

Mon 16 June
6pm
Upstairs at Up Country

page 18

ART IN THE WOODS WALK

Mon 16 June
7pm
Holme Styes Reservoir

page 18

NOT THE MESSIAH

Tues 17 June
8pm
Picturedrome

page 19

KATHERINE BRYAN & PIPPA TUNNELL

Wed 18 June
8pm
Holy Trinity Church, Hepworth

page 20

FIELDS OF VISION IN FOCUS

Thu 19 June
7pm
Barn@Malkin House

page 21

RUSSELL KANE

Fri 20 June
8pm
Picturedrome

page 23

ANNABEL PITCHER & WENDY CONSTANCE

Sat 21 June
11am
Phoenix Centre

page 24

INTO THE WOODS

Sat 21 June
1pm
Barnaby's Nursery, Mearhouse Farm

page 25

MATTHEW BARLEY

Sat 21 June
8pm
Holy Trinity Church, Holmfirth

page 26

1852 FLOOD WALK

Sun 22 June
10.30am
Fieldhead Lane Car Park,
Digley Reservoir

page 28

TOUR OF INFINITE POSSIBILITY

Sun 22 June
4pm
Holmfirth High School

page 29

HACKNEY COLLIERY BAND

Sun 22 June
8pm
Picturedrome

page 30



INSTALLATION

Friday 13 -
Sunday 22 June

Holme Styes
reservoir and
woods

Free

Art in the Woods

This popular event returns in 2014, featuring over 20 local artists inspired by the theme of journeys and having developed their environmental art ideas with support from **Fields of Vision** commissioned artist **Trudi Entwistle**. Free throughout the Festival, this art trail will encourage families to enjoy the inspiring setting of Holme Styes reservoir and woods, and will include a public vote for their three favourite artworks. *Art in the Woods is able to take place thanks to the generosity and continued support of the land owner, Tim Kirk.*

Fields of Vision

This exhibition, staged in a venue adjacent to the site being transformed by artist **Catherine Bertola**, will document the process behind the ambitious land art project **Fields of Vision**, as part of the Yorkshire Festival. The exhibition will feature the ideas behind the giant artworks and the process behind their creation, involving sowing, scorching and marking grass to create huge, field-sized living installations.

*Please note opening hours as left: other viewing times by arrangement -
email malkinhouse@aol.com*

www.holmfirthartsfestival.co.uk | box office 01484 222444

EXHIBITION

Saturday 14 June -
Saturday 21 June

Barn@Malkin
House

Opening hours:
11am - 5pm,
weekends

4.30pm - 6.30pm,
weekdays

Free



INSTALLATION

Thursday 12 -
Sunday 22 June

Flow can be
seen in the
river between
Holmfirth Mill
Shop and The
Rug Shop on
Hollowgate
Free

Holmfirth Writers' Group have been working with local schools and community groups to create postcards and writing around the theme of water and the Holme Valley. Keep an eye out for their postcard bunting in shops and public spaces around Holmfirth as well as some watery words to accompany the **Flow** exhibition.

Flow

Holmfirth-based artist **John Holt** has created a series of eight ceramic sculptures which will be placed strategically just below the surface of the River Holme as it courses its way through the valley. The work acknowledges the power and cyclical nature of water and also impacts on the flow of the river as it pours through apertures and over the surface of the sculptures. This commission will encourage a fresh and intriguing look at the town's central waterway.



EXHIBITION

**Helen Bray Studio
Dunford Road**

**10am - 4pm
Monday to Friday**

**10am - 2pm
Saturday**

*The studio
may be closed
occasionally for
appointments*

LAUNCH EVENT

**Thursday 12 June
7.30pm**

**Helen Bray Studio
Dunford Road**

**Free – please book
a ticket in advance**

A Wall of Water

This Festival-commissioned exhibition shows many rarely seen images by local photographer **Harry Bray** documenting the 1944 flood in Holmfirth, the 70th anniversary of which is marked during this year's Festival. The exhibition will be accompanied by Mike Wade's **A Wall of Water** documentary running continuously, featuring oral histories of survivors and their families as well as a fuller account of the events leading up to and following the flood, which had such a marked impact on the town's architecture and people.

Festival Launch

Join us for a drink to mark the launch of the Festival, and to view a new exhibition of rare images of the 1944 Holmfirth flood, taken by local photographer **Harry Bray**.



www.holmfirthartsfestival.co.uk | box office 01484 222444

CHILDREN'S
THEATRE

**Friday 13 June
4.30pm - 5.30pm**

**Holmfirth
Methodist Church
£6 (£4 concs)**

*The show is
especially suitable
for children aged
3-7 years, their
families and
teachers*



Monday's Child

Monday's Child tells the story of the unique bond between a grandmother and a little girl. Grandma is becoming forgetful, but does remember to visit every week and play until bedtime. Together, they love to sing and dress up and are often oblivious of the challenges that the real world throws at them.

Written by award-winning writer Brendan Murray and with live music and dance, this imaginative and dream-like story explores how we learn, remember, grow old and cope with new challenges. Join us for a funny, tender exploration of worlds old and new by the award-winning **Tutti Frutti** theatre company, whose **Hue Boy** delighted festival audiences last year.



FRIDAY 13 JUNE



LIVE MUSIC AND ANIMATION

Friday 13 June
10pm and 10.30pm

By the River
Holme, near
Crown Bottom
car park

Free

*Supported by
Jazz North*

Ancient Waters

Ancient Waters is an exciting new collaboration between musician **Arun Ghosh** and artist **Fabric Lenny** commissioned for the opening weekend of the Festival.

Culminating in a live after-dark performance along the river in central Holmfirth, **Ancient Waters** will blend music and live projection to create a spontaneous flow of imagery and sound, celebrating and echoing the landscape of the Holme Valley.

Throughout these two 20 minute performances, live drawing and animation will respond to live music which taps into ancient melodies, rhythms and rituals. Join us as these two artists paint pictures with sound, and search for an improvised synergy between music and image.

FESTIVAL OF IDEAS: SPOKEN WORD

Friday 13 June

Workshop
4pm - 6pm:
upstairs at
Carniceria - £10
(to include
performance)

Performance
7.30pm:
Cellar 88 - £5



FIRM OF POETS

A Firm of Poets

Do you ever feel like you'd like to stand up in front of an audience and give it your all? Well, our afternoon poetry workshop will give you the chance. Bring a poem that you would like to perform (not too long) and a willingness to give it a go in front of fellow poets, and then perhaps in front of a larger audience for the 'Firm's' show later in the day. Go on – we dare you!

A Firm of Poets are seasoned spoken word artists. Formed during an all-night walk around the back fields of Glastonbury Festival, their manifesto is to bring vital, accessible and energetic spoken word to the masses. Join us for an evening of irrepressible entertainment.

www.holmfirthartsfestival.co.uk | box office 01484 222444



Artist - Fabric Lenny

FAMILY WALK

Saturday 14 June

10am - 12.30pm

Tickets £5.00

(£2.50 concs)

Meet at Holme Styes Reservoir, Greave Road

Sorry, terrain not suitable for buggies or wheelchairs.

WORKSHOP

Saturday 14 June

2pm - 4pm

Gallery Room, upstairs at Holy Trinity Church, Holmfirth

£2.50 - pay on the day

"fairandfunky creative workshops keep children enthralled and bring out their creativity"

KIRKLEES MARKETS

Art in the Woods Family Walk

Bring the children and the dog, we're going on an art, history and nature ramble. A guided walk and talk around the **Art in the Woods** trail up at Holme Styes Reservoir with a local historian, some of the exhibiting artists and Art in the Woods curator **Sarah Branson**. Activities for young children along the route. Refreshments and home baking, picnic style at the half way point. Meet at Holme Styes Reservoir, Greave Road 10 am sharp. Length of the walk is 1.4 miles and duration will be approximately two hours. *Suitable walking shoe/boots are advisable.*

Imaginariums

Join fairandfunky for a SCRAPtastic workshop and enter a world of imagination! Using a range of recycled and found materials you are invited to create a world within a box: where will your imagination take you? All fairandfunky workshops encourage participants to think about the world around them in imaginative, enjoyable arts projects where young people of all ages have the freedom to be creative and get messy! Refreshments available - drop in for as long as you like, or stay for the afternoon.



www.holmfirthartsfestival.co.uk | box office 01484 222444



SPOKEN WORD

Saturday 14 June

2pm & 5pm

Old Bridge Hotel car park

£10 (£8 concs)

"Charming, totally involving show... a must see"

THE SKINNY

"This enchanting ride"

EXEUNT MAGAZINE



Cape Wrath

An epic journey in a stationary minibus

"After he retired, my Grandad went on a trip from the Midlands up to Cape Wrath, the most north-westerly point of his native Scotland. He sat, looked at the sea, and thought about his life. Then he got up and went home. Over 20 years later, I got on a coach and followed in his footsteps. This is what I learned."

Following a sell-out run at 2013's Edinburgh Fringe, Third Angel presents a story of family, of fellow travellers, of whisky and chocolate and the longest bus journey in Britain, told to a small audience inside a stationary minibus. Cape Wrath is heartfelt, moving and funny, a compelling intimate journey to the edge of our island. Very limited number of seats available - don't miss it!





MUSIC

Saturday 14 June
8pm

Holmfirth Civic
Hall

£12 (£10 concs)

*"Irresistibly
danceable grooves
... makes the heart
leap with joy"*

ALL ABOUT JAZZ

*"...an upfront mix
of South Asian
melodies and
western street-
grooves..."*

DAILY TELEGRAPH



Photographer - Andrea Artz

Arun Ghosh quintet

Arun Ghosh brings his trademark and renowned Indo-jazz sound to Holmfirth, combining Bengali folk music, qawwali, Sufi stomp, Nepalese song and the trance-like music of Sri Lanka. The British-Asian clarinettist and composer is a leading light on UK and international jazz scenes, captivating audiences and critics with his passionate and dynamic performance style, eloquent musical expression and a healthy dose of rock 'n' roll spirit.

Tonight's show features a performance of Ghosh's Indo-jazz chamber work, **A South Asian Suite**. Released as an album last autumn, this mesmeric and enchanting six-movement suite is inspired by the music, landscape and people of the Indian subcontinent, viewed from Ghosh's unique perspective.

Pieces from Ghosh's acclaimed albums **Northern Namaste** and **Primal Odyssey**, plus euphoric live favourites, comprise the second half.

MUSIC AND CYCLING

Sunday 15 June
12pm and 2pm

Town Centre -
Hollowgate,
Town Gate

Free



Eine Brise (A Breeze)

Cycling as you've never seen or heard it before! Described as a moving sonic installation for bicycles, **Eine Brise** involves up to 111 cyclists travelling around the centre of Holmfirth making simple sounds such as bell ringing, whistling, and singing, at signed stages of the route. The piece was originally written by the Argentine-German composer **Mauricio Kagel** in 1996 and Holmfirth Arts Festival's Yorkshire premiere performance will be directed by local composer and animator **Barry Russell**. Make sure you arrive on time to catch a miniature gem of a cycling experience!

If you would like to participate in the performance, or act as a volunteer marshall, please email us at bike@holmfirthartsfestival.co.uk by Monday 2 June





MUSIC

Sunday 15 June
3pm
Victoria Park
Free

Holmfirth Sing

We've done it before and we're doing it again – what better way to spend your Sunday afternoon than relaxing on the grass overlooking Holmfirth and singing with your neighbours? This year our event will be a re-creation of the 1944 **Holmfirth Sing**, the same year that heavy rain resulted in a surge of water down the Holme Valley and a devastating flood – so fingers crossed for a dry day! Led by composer Barry Russell, our mass sing will be accompanied by players from the Holme Valley Orchestra.

WALK

Sunday 15 June
5.30pm
Meet in Victoria Park
£6 (£4 concs)

1944 Flood Walk

On Whit Monday 1944, a glorious sunny day, the people of Holmfirth were celebrating the end of the Whit walk with a communal sing in the park. Then the sky turned black, the heavens opened and a 15 foot wall of water hit the town. Join us, after this year's sing, for a walk around the town to hear what happened. We conclude in Helen Bray's Studio with a wine reception and the exhibition of Harry Bray's photographs of the flood. The walk lasts 1.5 hours – booking in advance recommended.

www.holmfirthartsfestival.co.uk | box office 01484 222444

CHILDREN'S
THEATRE

Monday 16 June
4.30pm - 5.30pm

Holmfirth
Methodist Church
£6 (£4 concs)

*"An utterly
 magical stage
 adaptation
 of Michael
 Morpurgo's
 enthralling
 children's tale"*

THE STAGE

*"Breathtakingly
 beautiful and
 utterly charming...
 a must see"*

PRIMARY TIMES

*Suitable for 5 - 11
 year olds, their
 families and
 everyone who
 loves stories*

I Believe in Unicorns

This intimate show is set in a library full of books that hold more than stories within their pages. It is a tale of the power of books, and the bravery of a young boy called Tomas who hates reading and school, but his world is turned upside down the day he meets the Unicorn Lady in his local library...

This enchanting and interactive show by Olivier Award-nominated Wizard Presents sparks imagination in both young and old. Add your own piece of magic by bringing a children's book to become part of the set, and swap it for another at the end.



FESTIVAL OF IDEAS:
ART AND POETRYMonday 16 June
6pmUp Country
(upstairs)

£3

SCULPTURE WALK

Monday 16 June
7pm - 10pmMeet at Holme
Styes Reservoir,
Greave Road

£5 (£2.50 concs)

Flow & Holmfirth Writers' Group

Join us for the official launch of **Flow**, a project which celebrates the power of water and its impact on the Holme Valley (see page 7). Local artist **John Holt** will be talking about how his ideas for the installation came about and he will be joined by members of **Holmfirth Writers' Group** reading water-themed poems and prose developed with schools and community groups.

Art in the Woods Sunset Walk

Enjoy the **History and Art** talk and ramble at a more leisurely pace at our planned evening walk, soaking up the atmosphere of sunset and stillness. Meet at 7pm sharp - details of the walk can be found on page 12 minus the family activities, with the addition of coffee and cakes back at Choppards Mission at the end of the walk, where old maps and photographs will also be on display.



THEATRE

Tuesday 17 June
8pm - 9pm

Picturedrome

£11 (£9 concs)

*"Laugh-out-loud
funny"*

THREE WEEKS

*"George Telfer's
performance is
nothing short of
magnificent"*

CHORTLE

*"You don't have to
be a fan of Monty
Python to enjoy
this brilliant and
moving play...an
incredible show"*

THREE WEEKS

*"I've seen possibly
150+ shows at
Edinburgh over
the years & this
may well be the
best thing I've
ever seen"*

AUDIENCE MEMBER



Not the Messiah

Actor **George Telfer** goes on a one-man quest for the meaning of life as he tells the story of Graham Chapman – the only 'deceased' member of Monty Python's Flying Circus and also a doctor, mountaineer, comedian, raging alcoholic and pioneering gay-icon.

With award-winning writing by **Tom Crawshaw**, theatre company Three's Company takes you on a laugh-out-loud yet poignant theatrical journey, following sell-out success at the Buxton and Edinburgh Fringes.





MUSIC

Wednesday 18 June
8pm

Holy Trinity
Church, Hepworth
£12 (£10 concs)

"A Great British
Hope...A rising
star in the arts
firmament"
THE TIMES

Katherine Bryan (flute) and Pippa Tunnell (harp)

Vaughan Williams *Fantasia on Greensleeves*
CPE Bach *Sonata in A minor for solo flute*
Saint-Saëns *Fantasia*

INTERVAL

Ravel *Pavane*
William Alwyn *Naiades*
Paganini *Caprice no 24*
Saint-Saëns *Romance in D flat*
Ibert *Entracte*

When a flute and a harp come together, something magical happens, and we're delighted to be bringing virtuoso musicians **Katherine Bryan** and **Pippa Tunnell** to the atmospheric surroundings of Holy Trinity Church in Hepworth. The evening features a mix of sensuous French and lyrical English solos and duets, showcasing the virtuosity and sensitivity of these rising British stars of the classical music world. Katherine Bryan was appointed principal flautist with the Royal Scottish National Orchestra at the tender age of 21, and now performs as a concerto soloist with leading orchestras worldwide. Join us for a superb evening of music making.

www.holmfirthartsfestival.co.uk | box office 01484 222444

FESTIVAL OF IDEAS: VISUAL ARTS

Thursday 19 June

7pm - 8.30pm

Barn@Malkin
House

£8 (£6 concs) to
include a glass
of wine



Fields of Vision in Focus

The Festival hosts an exhibition about the large-scale land art project **Fields of Vision** in the distinctive setting of the Barn@Malkin House, adjacent to one of the newly commissioned artworks by artist **Catherine Bertola** as part of the Yorkshire Festival. **Fields of Vision in Focus** will feature the project's leader, Geoff Wood, in conversation with commissioned Fields of Vision artists **Jo Gorner** and **Trudi Entwistle** to discuss the project's development, and will include a visit to the viewing area for the artwork by **Catherine Bertola**, and a glass of wine. Meet the artists and hear the story behind the creation of these giant artworks, which will beautifully complement the **Grand Départ** when it passes through Holmfirth just over two weeks later.

Please note that parking at the Barn@Malkin House is limited to those with disabled access needs but the walk to the viewing area is not suitable for anyone with disabilities – for more information email info@holmfirthartsfestival.co.uk



Artist - Jo Gorner



COMEDY

Friday 20 June

8pm

Picturedrome

£15 (£12 concs)

Russell Kane - Smallness

What is it with us and smallness? We Brits love it - being tiny but fierce, close but distant. Jedward-haired, award-winning **Russell Kane** returns with a new blisteringly big-small show. So treat yourself to a Kane-ing and join us for an hour of fast-paced silliness with soul.

"A seriously good comedian"

THE TIMES

"Kane is at the top of his game"

THE GUARDIAN

"If he keeps making shows this smart, and this funny, he's going to be very big indeed"

THE TELEGRAPH

"A smart, probing brain lurks below the vertiginous quiff"

THE EVENING STANDARD

"Something for all ages to relate to... I went with my parents who are 40 years my senior and we were all in tears of laughter"

AUDIENCE MEMBER



LITERATURE

Saturday 21 June

11am - 12pm

Phoenix Centre

£6 (£4 concs)

Meet the author: Annabel Pitcher & Wendy Constance

Come and meet local writer **Annabel Pitcher** who delighted young readers with her moving and beautifully-written teenage novel, **My Sister Lives on the Mantelpiece**, famously endorsed by actor David Tennant. Her more recent book, the heartbreaking and hilarious **Ketchup Clouds**, finds 15-year-old Zoe harboring a terrible secret – one which is only revealed when she starts writing to a Death Row inmate in Texas.

Wendy Constance is the winner of the Times/Chicken House Children's Fiction Competition 2013 with her award-winning teenage novel **Brave**, which follows Wild Horse and Blue Bird as they set out on the most dangerous adventure of their lives. Now's your chance to ask Annabel and Wendy everything you want to know about their books, and what inspires their stories, as they chat to writer James Nash about their work.



www.holmfirthartsfestival.co.uk | box office 01484 222444



FAMILY WORKSHOP

Saturday 21 June

1pm - 4pm

Barnaby's Nursery,
Mearhouse Farm

£5 (£3 concs) -
family ticket for
up to 4 people
for £15

Into the Woods

An outdoor adventure for the whole family. Join us as we walk to private woodland to while away an afternoon getting messy, getting creative, having fun! Scavenger hunts, wood crafts, clay and so much more, led by local artists. Experience the magic of a campfire as we make hot chocolate and popcorn. Meet at Barnaby's Nursery, Mearhouse Farm, Sheffield Road, Holmfirth, HD9 7HA where our adventure begins. Please book tickets in advance and wear appropriate outdoor clothing for the weather conditions. *We are sorry but the terrain is not suitable for pushchairs. No dogs.*

MUSIC

Saturday 21 June
8pm

Holy Trinity
Church, Holmfirth

£12
(£10 concs)

"One of the most
talented cellists
I've ever heard"

LEONARD
BERNSTEIN



Matthew Barley (solo cello)

Bach *Suite no. 5 in C minor*

Improvisations

Gabrielli *Ricercar no. 6*

INTERVAL

Britten *Suite no. 3 op. 87*

Improvisations

MacMillan *And He Rose*

Cello playing is at the centre of **Matthew Barley's** career, while his musical world has virtually no geographical, social or stylistic boundaries. Matthew is, quite simply, a cellist with a global reputation, having performed in over 50 countries with some of the world's most renowned orchestras.

In 2013 he embarked on an ambitious tour to celebrate Britten's anniversary, performing in a variety of locations - from lighthouses and caves to schools, prisons and hospitals, as well as more traditional concert venues like Wigmore Hall.

We're delighted to be able to bring this hugely talented cellist to Holmfirth - so please join us for a memorable recital by this dynamic British musician as he takes us on an eclectic and exciting journey through the cello repertoire, from the baroque to the present day.



Photographer - Ben Phillips

WALK

Sunday 22 June
10.30am

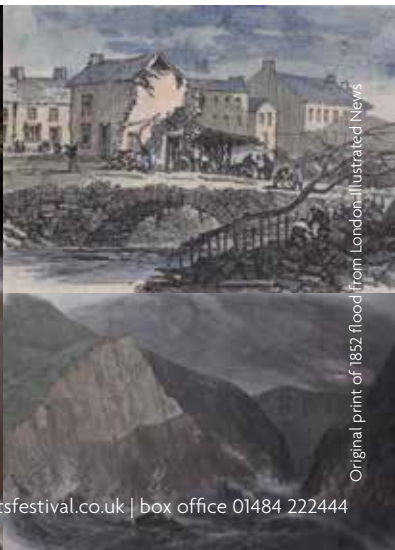
Fieldhead Lane
Car Park, Digley

£5 adults
(£3 concs)

1852 Flood Walk

On the bright moonlit night of 5th February 1852 the walls of Bilberry Reservoir burst. Walk with us, following the path of the 'roar of water' that swept through the steep and narrow valley, with disastrous consequences. Hear the tales of those who lost their lives and those who survived.

The walk lasts 3.5 hours and is of moderate difficulty. We recommend walkers leave one car in the car park at Digley and one at Hinchliffe Mill (end of walk). Alternatively, bus 314 leaves Holmfirth bus station at 10.06 am and arrives in Holme village at 10.18am - from here it's a 15 minute easy walk along Fieldhead Lane to the car park at Digley Reservoir. Buses from Hinchliffe Mill to Holmfirth are hourly on Sundays.



Original print of 1852 flood from London Illustrated News

MUSIC

Sunday 22 June
4pm

Holmfirth High
School

Free



The Tour of Infinite Possibility was commissioned by Yorkshire Festival 2014 with support from Arts Council England, Yorkshire Water, Welcome to Yorkshire and Yorkshire Local Authorities

Tour of Infinite Possibility

As part of Yorkshire Festival 2014, Leeds-based **Hope and Social** will be bringing their special brand of heart-on-the-sleeve music and trademark blue jackets to Holmfirth. Marching around the route of the Grand Départ the boys will be laughing in the face of impossibility and rocking into 12 magnificent Yorkshire towns over 2 crazy gig-packed weekends to make the biggest noise and stage the wildest party they possibly can.

But this isn't just any old tour. With drums and voices, hearts and souls they'll be gathering hundreds of new members as they ride along, forming **A Band Anyone Can Join**. In Holmfirth they'll be joined on stage by 100s of local musicians of all ages and abilities to make a uniquely Holmfirth party.

Come down to join them or even bring your pedalling legs down to power their pedal-powered stage!

This is a free event but you will need a ticket to guarantee admittance. Go to <http://hopeandsocial.com/tip/holmfirth> for more info.





MUSIC

Sunday 22 June

8pm

Picturedrome

£14 (£12 concs)

"An inspired musical collision"

THE TIMES

"This is the most enjoyable, fun music that I know of"

OBSERVER



Hackney Colliery Band

Hackney Colliery Band is East London's unique take on the brass band. Featuring trumpets, trombones, saxes, sousaphone and marching percussion, the band is totally acoustic and yet able to blow the roof off any room. Mining nuggets of funk, hip-hop and high-octane rock from the musical coalface and throwing in a few chunks of Balkan brass, ska and contemporary jazz for good measure, the Hackney Colliery Band's setlist is as diverse as the London borough that gave them their name.

Whether playing to a global audience of hundreds of millions at the Closing Ceremony of the London 2012 Olympics or to a few hundred in a club, you can be certain of one thing: this is high-energy, good-time music that'll make you want to move your feet.

www.holmfirthartsfestival.co.uk | box office 01484 222444

Get involved with the Festival

If you would like to get involved with the Festival team as a volunteer we would love to hear from you, either to help us year-round or to volunteer to work on specific events.

Whatever your availability and interests, we can offer you a rewarding and fun experience. Email info@holmfirthartsfestival.co.uk to find out how you can get involved, or speak to one of our team during the festival.

A big thank you!

Many, many people give their time and talent to make this festival happen and we are indebted to every single one of them. Apologies in advance to anyone we may have accidentally missed off this list:

Peter Carr, Picturedrome; Rachel Armstrong, Old Bridge Hotel; Sheila Sutton, The Nook/Carniceria; Elaine Park, Up Country; Kayti Naylor, Cellar 88; Joanna Midgley, The Co-operative Food; Rothwell family, Barnaby's Nursery; Sarah Branson; Jamie Frost; Tim Kirk; Trudi Entwistle; Geoff Wood; Hilary Hughes; Simon Jones; Kate Beard; Jeremy Davies; Andy Leader for press photography

Yorkshire Festival

Holmfirth Arts Festival is proud to feature events as part of the Yorkshire Festival 2014. Running from 27 March–6 July, Yorkshire Festival 2014 is the first ever Arts Festival to accompany the Tour de France in its 111 years. This is a Festival for everyone to enjoy and explore, taking place across the county – and the majority of the programme is FREE. Join us for this big celebration for Yorkshire as we get ready to welcome the **Grand Départ**.



No festival runs itself and the success of this year's event relies heavily on the support of a talented group of paid workers and volunteers – to whom we say a massive **THANK YOU!**

Festival Director

Fiona Goh

Festival Manager

Gail Price

Marketing & PR

Sally Brown

Social Media

Helen Robinson

Technical Management

TG Events

Accountants

Beldonbrook

Logo Design

Lightbulb

Design

Debra Hutchings

Festival team

Caroline Anstey

Greta Bradley

Helen Bray

John Coombes

Penny Hallam

Liz Heywood (chair)

Chris Long

Jane Madine

Anna Powell

Lynda van Ruiten

David Stephenson

Lesley Sykes

Board of Trustees

Keith Gibson (deputy chair)

Keith Griffin

Liz Heywood

Deborah Kaye

James Morgan

David Stephenson

Kitty Wright (chair)

Our funders and supporters



LOTTERY FUNDED



Holme Valley Parish Council



Jazz North

Holmfirth Arts Festival
is a member of
British Arts Festivals
Association and
Welcome to Yorkshire



Please support our restaurant and bar sponsors while you are in Holmfirth:



and try the Festival beer, brewed by The Nook

Venues and Accessibility

Holmfirth has some narrow streets, steps and cobbles in places and it can be difficult for people with limited mobility to get around. If you have any particular needs and you think we can help please email info@holmfirthartsfestival.co.uk and we will do our best to make suitable arrangements for you.

Barn@Malkin House

Brow Lane, Holmfirth,
HD9 2RJ
Situated approximately one mile outside Holmfirth with limited parking outside the venue – fully accessible

Barnaby's Nursery

Mearhouse Farm, Sheffield Road, Holmfirth, HD9 7HA
Not suitable for pushchairs or wheelchairs

Carniceria

3a Victoria Square, Holmfirth, HD9 2DN
Stairs to upstairs workshop space (no lift)

Cellar 88

11 Huddersfield Rd, Holmfirth, HD9 2JN
Steps up to front door and venue is downstairs

Choppards Mission

Choppards Bank Road, Holmfirth, HD9 2DA
There are several steps up to the door, with handrail

Digley Reservoir

Fieldhead Lane car park, Fieldhead Lane, Holmfirth, HD9 2QJ
Drive up to Holme Village and turn right just past Holme Castle – continue along Field Head Lane and car park

is on the left after about three quarters of a mile

Holme Styes Reservoir & Woods

Greave Road, Holmfirth HD9 2AQ
Drive up Dunford Road and turn right into Hade Edge and right again onto Greave Road – drive half a mile and park on left where you see the track down to Holme Styes

Holmfirth Civic Hall

Huddersfield Road, Holmfirth, HD9 3AS
Fully accessible

Helen Bray Studio

16-22 Dunford Road, Holmfirth, HD9 2DP
Fully accessible – limited parking outside

Holmfirth Methodist Church

School Street, Holmfirth, HD9 7EQ
Fully accessible

Holy Trinity Church

(Hepworth)
Dean Bridge Lane, Hepworth, HD9 1TR
Fully accessible

Holy Trinity Church

(Holmfirth)
Towngate, Holmfirth, HD9 1HA
There are two steps from the pavement into the church courtyard. A ramp is provided to provide wheelchair access to the church – stewards will assist you.

Old Bridge Hotel Car Park

Market Walk, Holmfirth, HD9 7DA
Limited parking outside Old Bridge, parking nearby

Phoenix Centre

Dunford Road, Holmfirth, HD9 2DR
Fully accessible, limited parking at rear, disabled parking outside

Picturedrome

Market Walk, Holmfirth, HD9 7DA
Fully accessible

Up Country

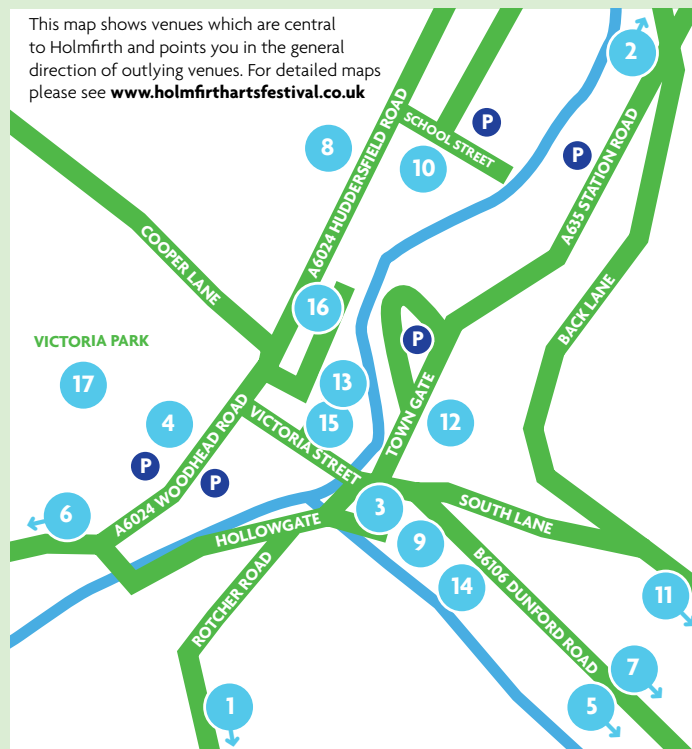
58 Huddersfield Road, Holmfirth, HD9 3AZ
Stairs to upstairs area

Victoria Park

Off Huddersfield Road (behind the Library and the Tourist Information Centre)
Fully accessible but steep climb through park or up Cooper Lane

Map

This map shows venues which are central to Holmfirth and points you in the general direction of outlying venues. For detailed maps please see www.holmfirthartsfestival.co.uk



- 1 Barn@Malkin House
- 2 Barnaby's Nursery, Mearhouse Farm
- 3 Carniceria
- 4 Cellar 88
- 5 Choppards Mission
- 6 Digley Reservoir
- 7 Holme Styes Reservoir
- 8 Holmfirth Civic Hall
- 9 Helen Bray Studio

- 10 Holmfirth Methodist Church
- 11 Holy Trinity Church (Hepworth)
- 12 Holy Trinity Parish Church (Holmfirth)
- 13 Old Bridge Hotel Car Park
- 14 Phoenix Centre
- 15 Picturedrome
- 16 Up Country
- 17 Victoria Park